

## ARG20812 anti-CD2 antibody [12-15] (FITC)

Package: 100 µg  
Store at: 4°C

### Summary

Product Description	FITC-conjugated Rat Monoclonal antibody [12-15] recognizes CD2
Tested Reactivity	Ms
Tested Application	BL, FACS, Puri
Specificity	Mouse CD2.
Host	Rat
Clonality	Monoclonal
Clone	12-15
Isotype	IgG1, kappa
Target Name	CD2
Species	Mouse
Immunogen	Crude plasma membranes of ESb cells
Conjugation	FITC
Alternate Names	T-cell surface antigen T11/Leu-5; LFA-3 receptor; T-cell surface antigen CD2; SRBC; Erythrocyte receptor; CD antigen CD2; T11; Rosette receptor; LFA-2

### Application Instructions

Application table	Application	Dilution
	BL	Assay-dependent
	FACS	< 1 µg/10 <sup>6</sup> cells
	Puri	Assay-dependent
Application Note	* The dilutions indicate recommended starting dilutions and the optimal dilutions or concentrations should be determined by the scientist.	

### Properties

Form	Liquid
Buffer	PBS and 0.1% Sodium azide.
Preservative	0.1% Sodium azide
Concentration	0.5 mg/ml
Storage instruction	Aliquot and store in the dark at 2-8°C. Keep protected from prolonged exposure to light. Avoid repeated freeze/thaw cycles. Suggest spin the vial prior to opening. The antibody solution should be gently mixed before use.
Note	For laboratory research only, not for drug, diagnostic or other use.

## Bioinformation

Database links [GeneID: 12481 Mouse](#)  
[Swiss-port # P08920 Mouse](#)

Gene Symbol CD2

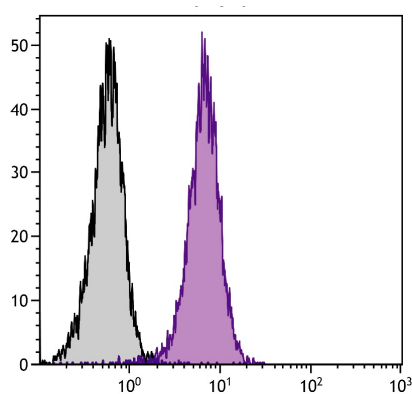
Gene Full Name CD2 antigen

**Background** CD2 is a surface antigen of the human T-lymphocyte lineage that is expressed on all peripheral blood T cells (summarized by Sewell et al., 1986 [PubMed 3490670]). It is one of the earliest T-cell markers, being present on more than 95% of thymocytes; it is also found on some natural killer cells but not on B lymphocytes. Monoclonal antibodies directed against CD2 inhibit the formation of rosettes with sheep erythrocytes, indicating that CD2 is the erythrocyte receptor or is closely associated with it.[supplied by OMIM, Jul 2010]

**Function** CD2 interacts with lymphocyte function-associated antigen (LFA-3) and CD48/BCM1 to mediate adhesion between T-cells and other cell types. CD2 is implicated in the triggering of T-cells, the cytoplasmic domain is implicated in the signaling function. [UniProt]

Calculated Mw 39 kDa

## Images



ARG20812 anti-CD2 antibody [12-15] (FITC) FACS image

Flow Cytometry: C57BL/6 Mouse splenocytes stained with ARG20812 anti-CD2 antibody [12-15] (FITC) and anti-CD19 antibody [6D5] (FITC).