

ARG20829 anti-CD11a / LFA1 alpha antibody [I21/7]

Package: 100 µg
Store at: -20°C

Summary

| | |
|---------------------|---|
| Product Description | Rat Monoclonal antibody [I21/7] recognizes CD11a / LFA1 alpha |
| Tested Reactivity | Ms |
| Tested Application | BL, FACS, ICC/IF, IHC-Fr, IP |
| Specificity | Mouse CD11a. The clone I21/7 reacts with the α subunit of mouse CD11a, also known as LFA-1, and a member of the integrin family of cell adhesion molecules. The antigen is expressed on thymocytes, T and B lymphocytes, and on non-lymphoid cells in the bone marrow. |
| Host | Rat |
| Clonality | Monoclonal |
| Clone | I21/7 |
| Isotype | IgG2a, kappa |
| Target Name | CD11a / LFA1 alpha |
| Species | Mouse |
| Immunogen | Whole BW5147 cells |
| Conjugation | Un-conjugated |
| Alternate Names | Leukocyte adhesion glycoprotein LFA-1 alpha chain; LFA1A; LFA-1A; Integrin alpha-L; CD11A; Leukocyte function-associated molecule 1 alpha chain; LFA-1; CD11 antigen-like family member A; CD antigen CD11a |

Application Instructions

| Application table | Application | Dilution |
|-------------------|--|-----------------|
| | BL | Assay-dependent |
| | FACS | Assay-dependent |
| | ICC/IF | Assay-dependent |
| | IHC-Fr | Assay-dependent |
| | IP | Assay-dependent |
| Application Note | * The dilutions indicate recommended starting dilutions and the optimal dilutions or concentrations should be determined by the scientist. | |

Properties

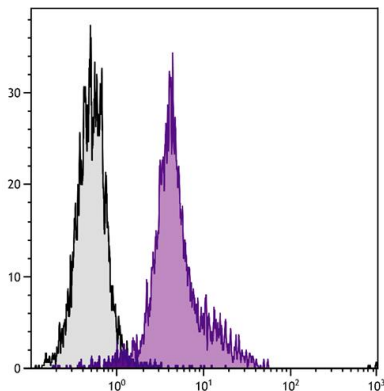
| | |
|---------------|--------------|
| Form | Liquid |
| Buffer | BBS (pH 8.2) |
| Concentration | 0.5 mg/ml |

| | |
|---------------------|---|
| Storage instruction | For continuous use, store undiluted antibody at 2-8°C for up to a week. For long-term storage, aliquot and store at -20°C. Storage in frost free freezers is not recommended. Avoid repeated freeze/thaw cycles. Suggest spin the vial prior to opening. The antibody solution should be gently mixed before use. |
| Note | For laboratory research only, not for drug, diagnostic or other use. |

Bioinformation

| | |
|----------------|---|
| Database links | GeneID: 16408 Mouse |
| Gene Symbol | ITGAL |
| Gene Full Name | integrin, alpha L (antigen CD11A (p180), lymphocyte function-associated antigen 1; alpha polypeptide) |
| Background | ITGAL encodes the integrin alpha L chain. Integrins are heterodimeric integral membrane proteins composed of an alpha chain and a beta chain. This I-domain containing alpha integrin combines with the beta 2 chain (ITGB2) to form the integrin lymphocyte function-associated antigen-1 (LFA-1), which is expressed on all leukocytes. LFA-1 plays a central role in leukocyte intercellular adhesion through interactions with its ligands, ICAMs 1-3 (intercellular adhesion molecules 1 through 3), and also functions in lymphocyte costimulatory signaling. Two transcript variants encoding different isoforms have been found for this gene. [provided by RefSeq, Jul 2008] |
| Function | Integrin alpha-L/beta-2 is a receptor for ICAM1, ICAM2, ICAM3 and ICAM4. It is involved in a variety of immune phenomena including leukocyte-endothelial cell interaction, cytotoxic T-cell mediated killing, and antibody dependent killing by granulocytes and monocytes. [UniProt] |
| Calculated Mw | 129 kDa |
| PTM | In resting T-cells, up to 40% of surface ITGAL is constitutively phosphorylated. Phosphorylation causes conformational changes needed for ligand binding and is necessary for activation by some physiological agents. |

Images



ARG20829 anti-CD11a / LFA1 alpha antibody [I21/7] FACS image

Flow Cytometry: BALB/c Mouse splenocytes stained with ARG20829 anti-CD11a / LFA1 alpha antibody [I21/7] followed by [ARG21700](#) Mouse anti-Rat IgG2a antibody [2A8F4] (FITC).