

**ARG20830**  
**anti-CD11a / LFA1 alpha antibody [I21/7] (FITC)**

Package: 100 µg

Store at: 4°C

### Summary

Product Description	FITC-conjugated Rat Monoclonal antibody [I21/7] recognizes CD11a / LFA1 alpha
Tested Reactivity	Ms
Tested Application	BL, FACS, ICC/IF, IHC-Fr
Specificity	Mouse CD11a. The clone I21/7 reacts with the $\alpha$ subunit of mouse CD11a, also known as LFA-1, and a member of the integrin family of cell adhesion molecules. The antigen is expressed on thymocytes, T and B lymphocytes, and on non-lymphoid cells in the bone marrow.
Host	Rat
Clonality	Monoclonal
Clone	I21/7
Isotype	IgG2a, kappa
Target Name	CD11a / LFA1 alpha
Species	Mouse
Immunogen	Whole BW5147 cells
Conjugation	FITC
Alternate Names	Leukocyte adhesion glycoprotein LFA-1 alpha chain; LFA1A; LFA-1A; Integrin alpha-L; CD11A; Leukocyte function-associated molecule 1 alpha chain; LFA-1; CD11 antigen-like family member A; CD antigen CD11a

### Application Instructions

Application table	Application	Dilution
	BL	Assay-dependent
	FACS	< 1 µg/10 <sup>6</sup> cells
	ICC/IF	Assay-dependent
	IHC-Fr	Assay-dependent
Application Note	* The dilutions indicate recommended starting dilutions and the optimal dilutions or concentrations should be determined by the scientist.	

### Properties

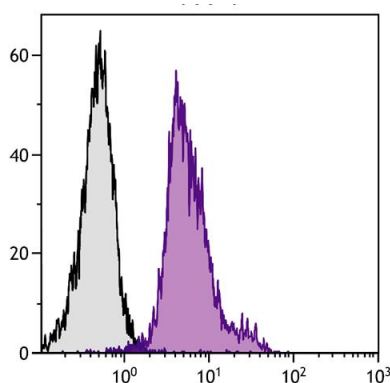
Form	Liquid
Buffer	PBS and 0.1% Sodium azide.
Preservative	0.1% Sodium azide
Concentration	0.5 mg/ml

Storage instruction	Aliquot and store in the dark at 2-8°C. Keep protected from prolonged exposure to light. Avoid repeated freeze/thaw cycles. Suggest spin the vial prior to opening. The antibody solution should be gently mixed before use.
Note	For laboratory research only, not for drug, diagnostic or other use.

## Bioinformation

Database links	<a href="#">GeneID: 16408 Mouse</a>
Gene Symbol	ITGAL
Gene Full Name	integrin, alpha L (antigen CD11A (p180), lymphocyte function-associated antigen 1; alpha polypeptide)
Background	ITGAL encodes the integrin alpha L chain. Integrins are heterodimeric integral membrane proteins composed of an alpha chain and a beta chain. This I-domain containing alpha integrin combines with the beta 2 chain (ITGB2) to form the integrin lymphocyte function-associated antigen-1 (LFA-1), which is expressed on all leukocytes. LFA-1 plays a central role in leukocyte intercellular adhesion through interactions with its ligands, ICAMs 1-3 (intercellular adhesion molecules 1 through 3), and also functions in lymphocyte costimulatory signaling. Two transcript variants encoding different isoforms have been found for this gene. [provided by RefSeq, Jul 2008]
Function	Integrin alpha-L/beta-2 is a receptor for ICAM1, ICAM2, ICAM3 and ICAM4. It is involved in a variety of immune phenomena including leukocyte-endothelial cell interaction, cytotoxic T-cell mediated killing, and antibody dependent killing by granulocytes and monocytes. [UniProt]
Calculated Mw	129 kDa
PTM	In resting T-cells, up to 40% of surface ITGAL is constitutively phosphorylated. Phosphorylation causes conformational changes needed for ligand binding and is necessary for activation by some physiological agents.

## Images



ARG20830 anti-CD11a / LFA1 alpha antibody [I21/7] (FITC) FACS image

Flow Cytometry: BALB/c Mouse splenocytes stained with ARG20830 anti-CD11a / LFA1 alpha antibody [I21/7] (FITC).