

ARG20870 anti-CD22 antibody [2D6] (PE)

Package: 50 µg
Store at: 4°C

Summary

| | |
|---------------------|--|
| Product Description | PE-conjugated Rat Monoclonal antibody [2D6] recognizes CD22 |
| Tested Reactivity | Ms |
| Tested Application | Cell-Act , FACS, ICC/IF, IHC-Fr, IHC-P |
| Specificity | Mouse CD22. |
| Host | Rat |
| Clonality | Monoclonal |
| Clone | 2D6 |
| Isotype | IgG1, kappa |
| Target Name | CD22 |
| Antigen Species | Mouse |
| Immunogen | Splenic lymphocyte plasma membranes from CBA x C57 F1 mice |
| Conjugation | PE |
| Alternate Names | B-lymphocyte cell adhesion molecule; B-cell receptor CD22; T-cell surface antigen Leu-14; BL-CAM; SIGLEC-2; Sialic acid-binding Ig-like lectin 2; Siglec-2; CD antigen CD22; SIGLEC2 |

Application Instructions

| Application table | Application | Dilution |
|-------------------|--|--------------------------------|
| | Cell-Act | Assay-dependent |
| | FACS | < 0.2 µg/10 ⁶ cells |
| | ICC/IF | Assay-dependent |
| | IHC-Fr | Assay-dependent |
| | IHC-P | Assay-dependent |
| Application Note | * The dilutions indicate recommended starting dilutions and the optimal dilutions or concentrations should be determined by the scientist. | |
| Calculated Mw | 95 kDa | |

Properties

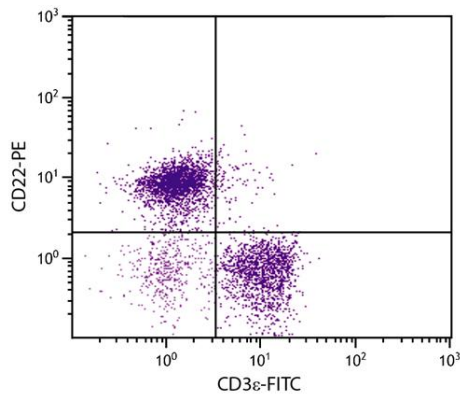
| | |
|--------------|-------------------------------------|
| Form | Liquid |
| Buffer | PBS, 0.1% Sodium azide and Sucrose. |
| Preservative | 0.1% Sodium azide |
| Stabilizer | Sucrose |

| | |
|---------------------|--|
| Concentration | 0.1 mg/ml |
| Storage instruction | Aliquot and store in the dark at 2-8°C. Keep protected from prolonged exposure to light. Avoid repeated freeze/thaw cycles. Suggest spin the vial prior to opening. The antibody solution should be gently mixed before use. |
| Note | For laboratory research only, not for drug, diagnostic or other use. |

Bioinformation

| | |
|----------------|--|
| Database links | GeneID: 12483 Mouse Swiss-port # P35329 Mouse |
| Gene Symbol | CD22 |
| Gene Full Name | CD22 antigen |
| Function | Mediates B-cell B-cell interactions. May be involved in the localization of B-cells in lymphoid tissues. Binds sialylated glycoproteins; one of which is CD45. Preferentially binds to alpha-2,6-linked sialic acid. The sialic acid recognition site can be masked by cis interactions with sialic acids on the same cell surface. Upon ligand induced tyrosine phosphorylation in the immune response seems to be involved in regulation of B-cell antigen receptor signaling. Plays a role in positive regulation through interaction with Src family tyrosine kinases and may also act as an inhibitory receptor by recruiting cytoplasmic phosphatases via their SH2 domains that block signal transduction through dephosphorylation of signaling molecules. [UniProt] |
| Research Area | Cancer antibody; Developmental Biology antibody; Immune System antibody; Immature B Cell Marker antibody |

Images



ARG20870 anti-CD22 antibody [2D6] (PE) FACS image

Flow Cytometry: BALB/c Mouse splenocytes stained with ARG20870 anti-CD22 antibody [2D6] (PE) and [ARG20817](#) anti-CD3ε antibody [C363.29B] (FITC).