

## ARG20873 anti-CD23 antibody [2G8]

Package: 100 µg  
Store at: -20°C

### Summary

Product Description	Rat Monoclonal antibody [2G8] recognizes CD23
Tested Reactivity	Ms
Tested Application	ELISA, FACS, IHC-Fr
Specificity	Mouse CD23.
Host	Rat
Clonality	Monoclonal
Clone	2G8
Isotype	IgG2a, kappa
Target Name	CD23
Antigen Species	Mouse
Immunogen	FcεR isolated from B cell lymphoma cell line M12.4.5
Conjugation	Un-conjugated
Alternate Names	CD23A; BLAST-2; Lymphocyte IgE receptor; CLEC4J; Immunoglobulin E-binding factor; CD23; IGEBF; Fc-epsilon-RII; CD antigen CD23; FCE2; Low affinity immunoglobulin epsilon Fc receptor; C-type lectin domain family 4 member J

### Application Instructions

Application table	Application	Dilution
	ELISA	Assay-dependent
	FACS	< 1 µg/10 <sup>6</sup> cells
	IHC-Fr	Assay-dependent
Application Note	* The dilutions indicate recommended starting dilutions and the optimal dilutions or concentrations should be determined by the scientist.	
Calculated Mw	36 kDa	

### Properties

Form	Liquid
Buffer	BBS (pH 8.2)
Concentration	0.5 mg/ml
Storage instruction	For continuous use, store undiluted antibody at 2-8°C for up to a week. For long-term storage, aliquot and store at -20°C. Storage in frost free freezers is not recommended. Avoid repeated freeze/thaw cycles. Suggest spin the vial prior to opening. The antibody solution should be gently mixed before use.

Note

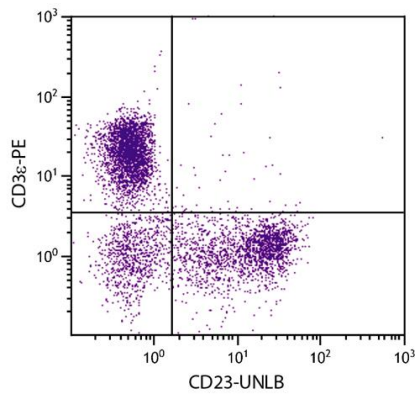
For laboratory research only, not for drug, diagnostic or other use.

## Bioinformation

---

Gene Symbol	FCER2
Gene Full Name	Fc receptor, IgE, low affinity II, alpha polypeptide
Background	The protein encoded by this gene is a B-cell specific antigen, and a low-affinity receptor for IgE. It has essential roles in B cell growth and differentiation, and the regulation of IgE production. This protein also exists as a soluble secreted form, then functioning as a potent mitogenic growth factor. Alternatively spliced transcript variants encoding different isoforms have been described for this gene.[provided by RefSeq, Jul 2011]
Function	Low-affinity receptor for immunoglobulin E (IgE) and CR2/CD21. Has essential roles in the regulation of IgE production and in the differentiation of B-cells (it is a B-cell-specific antigen). [UniProt]

## Images



ARG20873 anti-CD23 antibody [2G8] FACS image

Flow Cytometry: BALB/c Mouse splenocytes stained with ARG20873 anti-CD23 antibody [2G8] and [ARG20819](#) anti-CD3e antibody [C363.29B] (PE) followed by [ARG21700](#) Mouse anti-Rat IgG2a antibody [2A8F4] (FITC).