

ARG20878 anti-CD23 antibody [2G8] (PE-Cyanine 7)

Package: 50 µg
Store at: 4°C

Summary

Product Description	PE-Cyanine 7-conjugated Rat Monoclonal antibody [2G8] recognizes CD23
Tested Reactivity	Ms
Tested Application	FACS, IHC-Fr
Specificity	Mouse CD23.
Host	Rat
Clonality	Monoclonal
Clone	2G8
Isotype	IgG2a, kappa
Target Name	CD23
Species	Mouse
Immunogen	FcεR isolated from B cell lymphoma cell line M12.4.5
Conjugation	PE-Cyanine 7
Alternate Names	CD23A; BLAST-2; Lymphocyte IgE receptor; CLEC4J; Immunoglobulin E-binding factor; CD23; IGEBF; Fc-epsilon-RII; CD antigen CD23; FCE2; Low affinity immunoglobulin epsilon Fc receptor; C-type lectin domain family 4 member J

Application Instructions

Application table	Application	Dilution
	FACS	< 0.1 µg/10 ⁶ cells
	IHC-Fr	Assay-dependent
Application Note	* The dilutions indicate recommended starting dilutions and the optimal dilutions or concentrations should be determined by the scientist.	

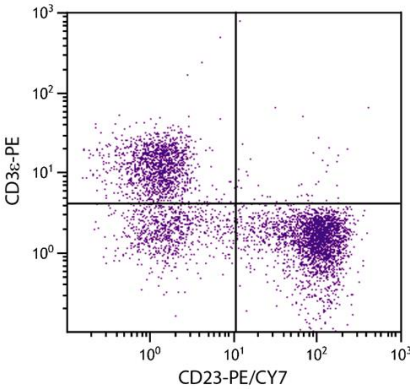
Properties

Form	Liquid
Buffer	PBS, 0.1% Sodium azide and Sucrose.
Preservative	0.1% Sodium azide
Stabilizer	Sucrose
Concentration	0.1 mg/ml
Storage instruction	Aliquot and store in the dark at 2-8°C. Keep protected from prolonged exposure to light. Avoid repeated freeze/thaw cycles. Suggest spin the vial prior to opening. The antibody solution should be gently mixed before use.

Bioinformation

Gene Symbol	FCER2
Gene Full Name	Fc receptor, IgE, low affinity II, alpha polypeptide
Background	The protein encoded by this gene is a B-cell specific antigen, and a low-affinity receptor for IgE. It has essential roles in B cell growth and differentiation, and the regulation of IgE production. This protein also exists as a soluble secreted form, then functioning as a potent mitogenic growth factor. Alternatively spliced transcript variants encoding different isoforms have been described for this gene.[provided by RefSeq, Jul 2011]
Function	Low-affinity receptor for immunoglobulin E (IgE) and CR2/CD21. Has essential roles in the regulation of IgE production and in the differentiation of B-cells (it is a B-cell-specific antigen). [UniProt]
Calculated Mw	36 kDa
PTM	N- and O-glycosylated. The secreted form sCD23 is produced by ADAM10-mediated ectodomain shedding.

Images



ARG20878 anti-CD23 antibody [2G8] (PE-Cyanine 7) FACS image

Flow Cytometry: BALB/c Mouse splenocytes stained with ARG20878 anti-CD23 antibody [2G8] (PE-Cyanine 7) and [ARG20819](#) anti-CD3e antibody [C363.29B] (PE).