

ARG20892 anti-CD25 antibody [3C7] (PE-Cyanine 5)

Package: 50 µg
Store at: 4°C

Summary

Product Description	PE-Cyanine 5-conjugated Rat Monoclonal antibody [3C7] recognizes CD25
Tested Reactivity	Ms
Tested Application	BL, FACS, IHC-Fr, Neut
Specificity	Mouse CD25. The clone 3C7 reacts with an epitope of CD25 which is distinct from that recognized by clone 7D4. 3C7, used in combination with 7D4 in culture, results in higher levels of inhibition of proliferation driven by IL-2 and generation of alloreactive CTL than either of these monoclonal antibodies alone.
Host	Rat
Clonality	Monoclonal
Clone	3C7
Isotype	IgG2b, kappa
Target Name	CD25
Species	Mouse
Immunogen	IL-2 dependent BALB/c helper T cell clone HT2
Conjugation	PE-Cyanine 5
Alternate Names	IL-2-RA; IL-2 receptor subunit alpha; CD25; TCGFR; TAC antigen; IL2R; CD antigen CD25; Interleukin-2 receptor subunit alpha; IL-2R subunit alpha; p55; IL2-RA; IDDM10

Application Instructions

Application table	Application	Dilution
	BL	Assay-dependent
	FACS	< 0.3 µg/10 ⁶ cells
	IHC-Fr	Assay-dependent
	Neut	Assay-dependent
Application Note	* The dilutions indicate recommended starting dilutions and the optimal dilutions or concentrations should be determined by the scientist.	

Properties

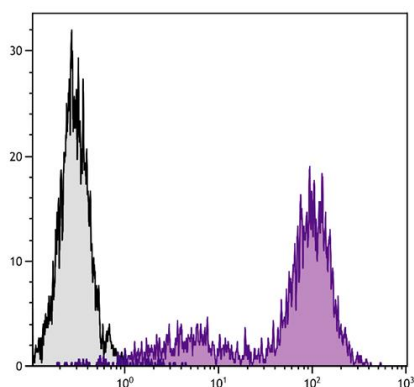
Form	Liquid
Buffer	PBS, 0.1% Sodium azide and Sucrose.
Preservative	0.1% Sodium azide
Stabilizer	Sucrose

Concentration	0.1 mg/ml
Storage instruction	Aliquot and store in the dark at 2-8°C. Keep protected from prolonged exposure to light. Avoid repeated freeze/thaw cycles. Suggest spin the vial prior to opening. The antibody solution should be gently mixed before use.
Note	For laboratory research only, not for drug, diagnostic or other use.

Bioinformation

Database links	GeneID: 16184 Mouse Swiss-port # P01590 Mouse
Gene Symbol	IL2RA
Gene Full Name	interleukin 2 receptor, alpha chain
Background	The interleukin 2 (IL2) receptor alpha (IL2RA) and beta (IL2RB) chains, together with the common gamma chain (IL2RG), constitute the high-affinity IL2 receptor. Homodimeric alpha chains (IL2RA) result in low-affinity receptor, while homodimeric beta (IL2RB) chains produce a medium-affinity receptor. Normally an integral-membrane protein, soluble IL2RA has been isolated and determined to result from extracellular proteolysis. Alternately-spliced IL2RA mRNAs have been isolated, but the significance of each is presently unknown. Mutations in this gene are associated with interleukin 2 receptor alpha deficiency.[provided by RefSeq, Nov 2009]
Function	Receptor for interleukin-2. [UniProt]
Research Area	Immune System antibody; Pre-B Cell Marker antibody
Calculated Mw	31 kDa

Images



ARG20892 anti-CD25 antibody [3C7] (PE-Cyanine 5) FACS image

Flow Cytometry: C57BL/6 Mouse cytotoxic T lymphocyte cell line CTLL-2 was stained with ARG20892 anti-CD25 antibody [3C7] (PE-Cyanine 5).