

ARG20939 anti-CD54 / ICAM1 antibody [YN1/1.7.4] (PE)

Package: 50 µg
Store at: 4°C

Summary

Product Description	PE-conjugated Rat Monoclonal antibody [YN1/1.7.4] recognizes CD54 / ICAM1
Tested Reactivity	Ms
Tested Application	BL, FACS, ICC/IF, IHC-Fr, Puri, WB
Specificity	Mouse CD54.
Host	Rat
Clonality	Monoclonal
Clone	YN1/1.7.4
Isotype	IgG2b, kappa
Target Name	CD54 / ICAM1
Species	Mouse
Immunogen	Mouse NS-1 cells
Conjugation	PE
Alternate Names	CD54; CD antigen CD54; BB2; P3.58; Intercellular adhesion molecule 1; Major group rhinovirus receptor; ICAM-1

Application Instructions

Application table	Application	Dilution
	BL	Assay-dependent
	FACS	< 0.2 µg/10 ⁶ cells
	ICC/IF	Assay-dependent
	IHC-Fr	Assay-dependent
	Puri	Assay-dependent
	WB	Assay-dependent
	Application Note	* The dilutions indicate recommended starting dilutions and the optimal dilutions or concentrations should be determined by the scientist.

Properties

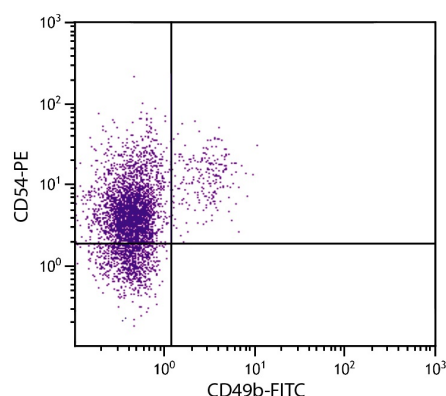
Form	Liquid
Buffer	PBS, 0.1% Sodium azide and Sucrose.
Preservative	0.1% Sodium azide
Stabilizer	Sucrose

Concentration	0.1 mg/ml
Storage instruction	Aliquot and store in the dark at 2-8°C. Keep protected from prolonged exposure to light. Avoid repeated freeze/thaw cycles. Suggest spin the vial prior to opening. The antibody solution should be gently mixed before use.
Note	For laboratory research only, not for drug, diagnostic or other use.

Bioinformation

Database links	GeneID: 15894 Mouse Swiss-port # P13597 Mouse
Gene Symbol	Icam1
Gene Full Name	intercellular adhesion molecule 1
Background	This gene encodes a cell surface glycoprotein which is typically expressed on endothelial cells and cells of the immune system. It binds to integrins of type CD11a / CD18, or CD11b / CD18 and is also exploited by Rhinovirus as a receptor. [provided by RefSeq, Jul 2008]
Function	ICAM proteins are ligands for the leukocyte adhesion protein LFA-1 (integrin alpha-L/beta-2). During leukocyte trans-endothelial migration, ICAM1 engagement promotes the assembly of endothelial apical cups through ARHGEF26/SGEF and RHOG activation (By similarity). [UniProt]
Research Area	Cell Biology and Cellular Response antibody; Developmental Biology antibody; Immune System antibody; Cytotoxic T Cell Surface Study antibody
Calculated Mw	58 kDa
PTM	Monoubiquitinated, which is promoted by MARCH9 and leads to endocytosis.

Images



ARG20939 anti-CD54 / ICAM1 antibody [YN1/1.7.4] (PE) FACS image

Flow Cytometry: C57BL/6 Mouse splenocytes stained with [ARG20939](#) anti-CD54 / ICAM1 antibody [YN1/1.7.4] (PE) and [ARG21027](#) anti-CD49b antibody [DX5] (FITC).