

ARG20981 anti-Ly6A/E antibody [D7] (PE)

Package: 100 µg
Store at: 4°C

Summary

Product Description	PE-conjugated Rat Monoclonal antibody [D7] recognizes Ly6A/E
Tested Reactivity	Ms
Tested Application	FACS, IHC-Fr, IHC-P, WB
Specificity	Mouse Ly-6A/E (Ly-6A.2 and Ly-6E.1). The clone D7 suggest that Ly-6A/E may be involved in B and T lymphocyte responses and it appears that the antigen may be required for T-cell receptor-mediated T-cell activation.
Host	Rat
Clonality	Monoclonal
Clone	D7
Isotype	IgG2a, kappa
Target Name	Ly6A/E
Species	Mouse
Immunogen	IL-2 dependent mouse (C57BL/6) cytotoxic T cell line CTL-L
Conjugation	PE
Alternate Names	T-cell-activating protein; TAP; Ly-6A.2; Ly-6E.1; Ly-6A.2/Ly-6E.1; Sca-1; Lymphocyte antigen 6A-2/6E-1; Sca1; SCA-1; Stem cell antigen 1; Ly-6A/E

Application Instructions

Application table	Application	Dilution
	FACS	< 0.2 µg/10 ⁶ cells
	IHC-Fr	Assay-dependent
	IHC-P	Assay-dependent
	WB	Assay-dependent

Application Note * The dilutions indicate recommended starting dilutions and the optimal dilutions or concentrations should be determined by the scientist.

Properties

Form	Liquid
Buffer	PBS, 0.1% Sodium azide and Sucrose.
Preservative	0.1% Sodium azide
Stabilizer	Sucrose
Concentration	0.1 mg/ml

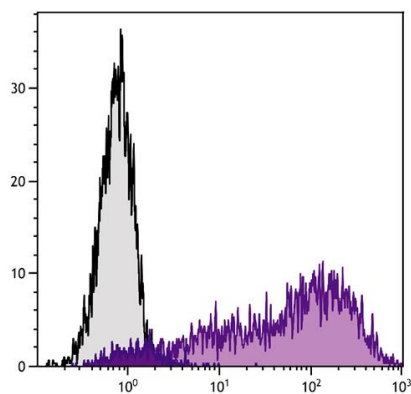
Storage instruction Aliquot and store in the dark at 2-8°C. Keep protected from prolonged exposure to light. Avoid repeated freeze/thaw cycles. Suggest spin the vial prior to opening. The antibody solution should be gently mixed before use.

Note For laboratory research only, not for drug, diagnostic or other use.

Bioinformation

Database links	GeneID: 110454 Mouse Swiss-port # P05533 Mouse
Gene Symbol	Ly6a
Gene Full Name	lymphocyte antigen 6 complex, locus A
Function	T-cell activation. [UniProt]
Calculated Mw	14 kDa

Images



ARG20981 anti-Ly6A/E antibody [D7] (PE) FACS image

Flow Cytometry: Con-A stimulated BALB/c Mouse splenocytes stained with ARG20981 anti-Ly6A/E antibody [D7] (PE).