

ARG20987
anti-Ly6C antibody [HK1.4] (Biotin)Package: 100 µg
Store at: 4°C

Summary

Product Description	Biotin-conjugated Rat Monoclonal antibody [HK1.4] recognizes Ly6C
Tested Reactivity	Ms
Tested Application	Cell-Act , FACS, IHC-Fr
Specificity	Mouse Ly-6C.
Host	Rat
Clonality	Monoclonal
Clone	HK1.4
Isotype	IgG2c, kappa
Target Name	Ly6C
Species	Mouse
Immunogen	L3 cloned CTL cells
Conjugation	Biotin
Alternate Names	AA959465; Ly-6C1; AA682074; Ly-6C; Lymphocyte antigen 6C1; Ly6c

Application Instructions

Application table	Application	Dilution
	Cell-Act	Assay-dependent
	FACS	< 1 µg/10 ⁶ cells
	IHC-Fr	Assay-dependent

Application Note * The dilutions indicate recommended starting dilutions and the optimal dilutions or concentrations should be determined by the scientist.

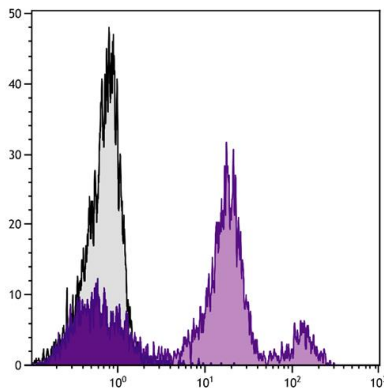
Properties

Form	Liquid
Buffer	PBS and 0.1% Sodium azide.
Preservative	0.1% Sodium azide
Concentration	0.5 mg/ml
Storage instruction	Aliquot and store in the dark at 2-8°C. Keep protected from prolonged exposure to light. Avoid repeated freeze/thaw cycles. Suggest spin the vial prior to opening. The antibody solution should be gently mixed before use.
Note	For laboratory research only, not for drug, diagnostic or other use.

Bioinformation

Database links	GeneID: 17067 Mouse Swiss-port # POCW02 Mouse
Gene Symbol	Ly6c1
Gene Full Name	lymphocyte antigen 6 complex, locus C1
Highlight	Related products: Ly6 antibodies ; Ly6 ELISA Kits ; Ly6 Duos / Panels ; Anti-Rat IgG secondary antibodies ; Related news: New antibody panels and duos for Tumor immune microenvironment Exploring Antiviral Immune Response
Research Area	Mouse Inflammatory Cell Marker antibody; Neutrophil Marker antibody; Mouse MDSC Marker antibody; Myeloid-derived suppressor cell antibody
Calculated Mw	14 kDa

Images



ARG20987 anti-Ly6C antibody [HK1.4] (Biotin) FACS image

Flow Cytometry: BALB/c Mouse bone marrow cells stained with ARG20987 anti-Ly6C antibody [HK1.4] (Biotin) followed by Streptavidin (FITC).