

ARG21041 anti-CD104 / Integrin beta 4 antibody [346-11A]

Package: 100 µg
Store at: -20°C

Summary

Product Description	Rat Monoclonal antibody [346-11A] recognizes CD104 / Integrin beta 4
Tested Reactivity	Ms
Tested Application	FACS, ICC/IF, IHC-Fr, IP, WB
Specificity	Mouse CD104. The clone 346-11A can block this adhesion.
Host	Rat
Clonality	Monoclonal
Clone	346-11A
Isotype	IgG2a, kappa
Target Name	CD104 / Integrin beta 4
Species	Mouse
Immunogen	Tumor-associated antigen TSP-180 purified from a transplantable BALB/c carcinoma
Conjugation	Un-conjugated
Alternate Names	Integrin beta-4; GP150; CD antigen CD104; CD104

Application Instructions

Application table	Application	Dilution
	FACS	Assay-dependent
	ICC/IF	Assay-dependent
	IHC-Fr	< 5 µg/ml
	IP	Assay-dependent
	WB	Assay-dependent
Application Note	* The dilutions indicate recommended starting dilutions and the optimal dilutions or concentrations should be determined by the scientist.	

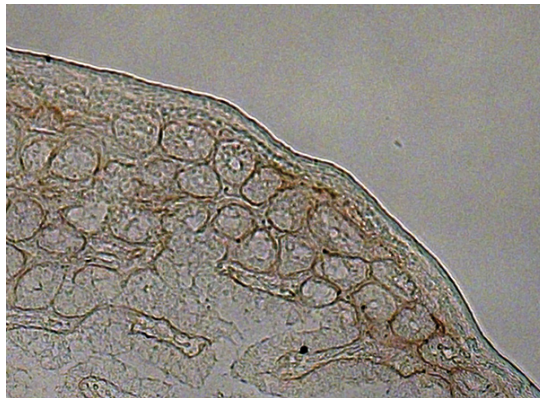
Properties

Form	Liquid
Buffer	BBS (pH 8.2)
Concentration	0.5 mg/ml
Storage instruction	For continuous use, store undiluted antibody at 2-8°C for up to a week. For long-term storage, aliquot and store at -20°C. Storage in frost free freezers is not recommended. Avoid repeated freeze/thaw cycles. Suggest spin the vial prior to opening. The antibody solution should be gently mixed before use.

Bioinformation

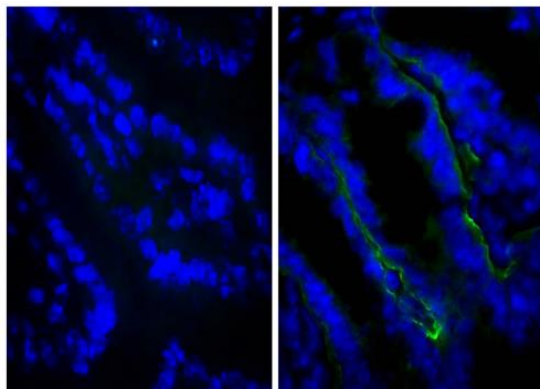
Database links	GeneID: 192897 Mouse Swiss-port # A2A863 Mouse
Gene Symbol	ITGB4
Gene Full Name	integrin beta 4
Background	Integrins are heterodimers comprised of alpha and beta subunits, that are noncovalently associated transmembrane glycoprotein receptors. Different combinations of alpha and beta polypeptides form complexes that vary in their ligand-binding specificities. Integrins mediate cell-matrix or cell-cell adhesion, and transduced signals that regulate gene expression and cell growth. This gene encodes the integrin beta 4 subunit, a receptor for the laminins. This subunit tends to associate with alpha 6 subunit and is likely to play a pivotal role in the biology of invasive carcinoma. Mutations in this gene are associated with epidermolysis bullosa with pyloric atresia. Multiple alternatively spliced transcript variants encoding distinct isoforms have been found for this gene. [provided by RefSeq, Jul 2008]
Function	Integrin alpha-6/beta-4 is a receptor for laminin. Plays a critical structural role in the hemidesmosome of epithelial cells. Is required for the regulation of keratinocyte polarity and motility. [UniProt]
Calculated Mw	202 kDa
PTM	Palmitoylated by DHHC3 at several cysteines of the membrane-proximal region, enhancing stability and cell surface expression. Palmitoylation also promotes secondary association with tetraspanins.

Images



ARG21041 anti-CD104 / Integrin beta 4 antibody [346-11A] IHC-Fr image

Immunohistochemistry: C57BL/6 Mouse intestine stained with ARG21041 anti-CD104 / Integrin beta 4 antibody [346-11A].



ARG21041 anti-CD104 / Integrin beta 4 antibody [346-11A] IHC-Fr image

Immunohistochemistry: Frozen section of BALB/c Mouse intestine tissue stained with [ARG20701](#) Rat IgG2a Isotype Control antibody [KLH/G2a-1-1] (left) and ARG21041 anti-CD104 / Integrin beta 4 antibody [346-11A] (right) followed by [ARG23770](#) Goat anti-Rat IgG (H+L) antibody (Biotin) (pre-adsorbed), Streptavidin (FITC), and DAPI.