

## ARG21099 anti-CD107b / LAMP2 antibody [ABL-93]

Package: 100 µg  
Store at: -20°C

### Summary

Product Description	Rat Monoclonal antibody [ABL-93] recognizes CD107b / LAMP2
Tested Reactivity	Ms
Tested Application	EM, FACS, ICC/IF, IHC-Fr, IP, WB
Specificity	Mouse CD107b.
Host	Rat
Clonality	Monoclonal
Clone	ABL-93
Isotype	IgG2a, kappa
Target Name	CD107b / LAMP2
Species	Mouse
Immunogen	Glycoproteins purified from BALB/c mouse embryo 3T3 cell line
Conjugation	Un-conjugated
Alternate Names	CD antigen CD107b; LAMPB; CD107b; LGP110; Lysosome-associated membrane glycoprotein 2; LAMP-2; CD107 antigen-like family member B; Lysosome-associated membrane protein 2

### Application Instructions

Application table	Application	Dilution
	EM	Assay-dependent
	FACS	< 1 µg/10 <sup>6</sup> cells
	ICC/IF	Assay-dependent
	IHC-Fr	Assay-dependent
	IP	Assay-dependent
	WB	Assay-dependent

**Application Note** \* The dilutions indicate recommended starting dilutions and the optimal dilutions or concentrations should be determined by the scientist.

### Properties

Form	Liquid
Buffer	BBS (pH 8.2)
Concentration	0.5 mg/ml
Storage instruction	For continuous use, store undiluted antibody at 2-8°C for up to a week. For long-term storage, aliquot and store at -20°C. Storage in frost free freezers is not recommended. Avoid repeated freeze/thaw

cycles. Suggest spin the vial prior to opening. The antibody solution should be gently mixed before use.

Note

For laboratory research only, not for drug, diagnostic or other use.

## Bioinformation

Database links

[GeneID: 16784 Mouse](#)

[Swiss-port # P17047 Mouse](#)

Gene Symbol

LAMP2

Gene Full Name

lysosomal-associated membrane protein 2

Background

The protein encoded by this gene is a member of a family of membrane glycoproteins. This glycoprotein provides selectins with carbohydrate ligands. It may play a role in tumor cell metastasis. It may also function in the protection, maintenance, and adhesion of the lysosome. Alternative splicing of this gene results in multiple transcript variants encoding distinct proteins. [provided by RefSeq, Jul 2008]

Function

Implicated in tumor cell metastasis. May function in protection of the lysosomal membrane from autodigestion, maintenance of the acidic environment of the lysosome, adhesion when expressed on the cell surface (plasma membrane), and inter- and intracellular signal transduction. Protects cells from the toxic effects of methylating mutagens. [UniProt]

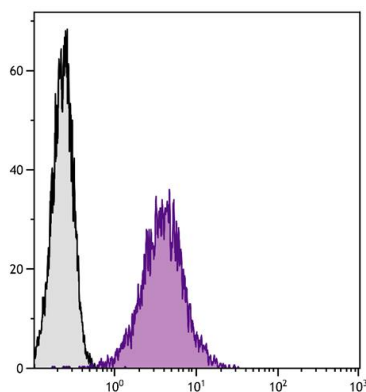
Calculated Mw

45 kDa

PTM

O- and N-glycosylated; some of the 16 N-linked glycans are polylactosaminoglycans.

## Images



ARG21099 anti-CD107b / LAMP2 antibody [ABL-93] FACS image

Flow Cytometry: Mouse M $\phi$  cells stained with ARG21099 anti-CD107b / LAMP2 antibody [ABL-93] followed by [ARG21704](#) Mouse anti-Rat IgG2a antibody [2A8F4] (PE).