

ARG21103 anti-CD102 / ICAM2 antibody [3C4] (FITC)

Package: 50 µg
Store at: 4°C

Summary

Product Description	FITC-conjugated Rat Monoclonal antibody [3C4] recognizes CD102 / ICAM2
Tested Reactivity	Ms
Tested Application	BL, FACS, ICC/IF, IHC-Fr
Specificity	Mouse CD102. The clone 3C4 reacts with the cell surface glycoprotein mouse CD102 (ICAM-2), a ligand for the leucocyte integrin CD11a/CD18 (LFA-1). CD102 is constitutively expressed on T cells, B cells, and at high levels on vascular endothelial cells. It is also expressed on a variety of leukocyte cell lines. The 3C4 antibody blocks the interaction between ICAM-2 and LFA-1.
Host	Rat
Clonality	Monoclonal
Clone	3C4
Isotype	IgG2a, kappa
Target Name	CD102 / ICAM2
Species	Mouse
Immunogen	COS cells transfected with mouse ICAM-2 cDNA and BW5147 AKR/J mouse thymoma cell line
Conjugation	FITC
Alternate Names	CD102; CD antigen CD102; Intercellular adhesion molecule 2; ICAM-2

Application Instructions

Application table	Application	Dilution
	BL	Assay-dependent
	FACS	< 1 µg/10 ⁶ cells
	ICC/IF	Assay-dependent
	IHC-Fr	Assay-dependent
Application Note	* The dilutions indicate recommended starting dilutions and the optimal dilutions or concentrations should be determined by the scientist.	

Properties

Form	Liquid
Buffer	PBS and 0.1% Sodium azide.
Preservative	0.1% Sodium azide
Concentration	0.5 mg/ml
Storage instruction	Aliquot and store in the dark at 2-8°C. Keep protected from prolonged exposure to light. Avoid repeated freeze/thaw cycles. Suggest spin the vial prior to opening. The antibody solution should be

gently mixed before use.

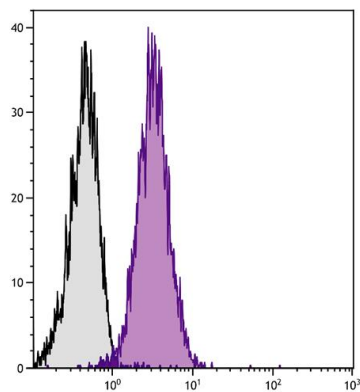
Note

For laboratory research only, not for drug, diagnostic or other use.

Bioinformation

Database links	GeneID: 15896 Mouse Swiss-port # P35330 Mouse
Gene Symbol	ICAM2
Gene Full Name	intercellular adhesion molecule 2
Background	The protein encoded by this gene is a member of the intercellular adhesion molecule (ICAM) family. All ICAM proteins are type I transmembrane glycoproteins, contain 2-9 immunoglobulin-like C2-type domains, and bind to the leukocyte adhesion LFA-1 protein. This protein may play a role in lymphocyte recirculation by blocking LFA-1-dependent cell adhesion. It mediates adhesive interactions important for antigen-specific immune response, NK-cell mediated clearance, lymphocyte recirculation, and other cellular interactions important for immune response and surveillance. Several transcript variants encoding the same protein have been found for this gene. [provided by RefSeq, Jul 2008]
Function	ICAM proteins are ligands for the leukocyte adhesion protein LFA-1 (integrin alpha-L/beta-2). ICAM2 may play a role in lymphocyte recirculation by blocking LFA-1-dependent cell adhesion. It mediates adhesive interactions important for antigen-specific immune response, NK-cell mediated clearance, lymphocyte recirculation, and other cellular interactions important for immune response and surveillance. [UniProt]
Calculated Mw	31 kDa

Images



ARG21103 anti-CD102 / ICAM2 antibody [3C4] (FITC) FACS image

Flow Cytometry: BALB/c Mouse splenocytes stained with ARG21103 anti-CD102 / ICAM2 antibody [3C4] (FITC).