

ARG21110
anti-CD1 antibody [76-7-4] (PE)Package: 50 µg
Store at: 4°C

Summary

Product Description	PE-conjugated Mouse Monoclonal antibody [76-7-4] recognizes CD1
Tested Reactivity	Pig
Tested Application	FACS, ICC/IF, IHC-Fr
Specificity	Porcine CD1.
Host	Mouse
Clonality	Monoclonal
Clone	76-7-4
Isotype	IgG2a, kappa
Target Name	CD1
Species	Pig
Immunogen	Fresh dd miniature swine thymocytes
Conjugation	PE
Alternate Names	R4; FCB6; CD antigen CD1a; T6; T-cell surface antigen T6/Leu-6; hTa1 thymocyte antigen; T-cell surface glycoprotein CD1a; CD1; HTA1

Application Instructions

Application table	Application	Dilution
	FACS	< 0.2 µg/10 ⁶ cells
	ICC/IF	Assay-dependent
	IHC-Fr	Assay-dependent
Application Note	* The dilutions indicate recommended starting dilutions and the optimal dilutions or concentrations should be determined by the scientist.	

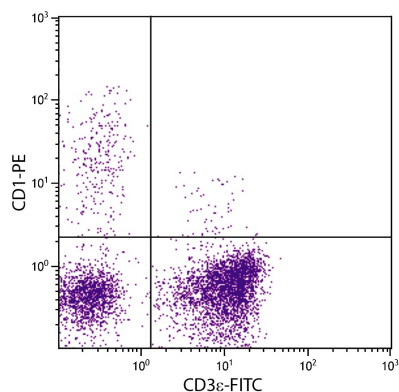
Properties

Form	Liquid
Buffer	PBS, 0.1% Sodium azide and Sucrose.
Preservative	0.1% Sodium azide
Stabilizer	Sucrose
Concentration	0.1 mg/ml
Storage instruction	Aliquot and store in the dark at 2-8°C. Keep protected from prolonged exposure to light. Avoid repeated freeze/thaw cycles. Suggest spin the vial prior to opening. The antibody solution should be gently mixed before use.

Bioinformation

Gene Symbol	CD1A
Gene Full Name	CD1 antigen
Background	This gene encodes a member of the CD1 family of transmembrane glycoproteins, which are structurally related to the major histocompatibility complex (MHC) proteins and form heterodimers with beta-2-microglobulin. The CD1 proteins mediate the presentation of primarily lipid and glycolipid antigens of self or microbial origin to T cells. The human genome contains five CD1 family genes organized in a cluster on chromosome 1. The CD1 family members are thought to differ in their cellular localization and specificity for particular lipid ligands. The protein encoded by this gene localizes to the plasma membrane and to recycling vesicles of the early endocytic system. Alternatively spliced transcript variants have been observed, but their biological validity has not been determined. [provided by RefSeq, Jul 2008]
Function	Antigen-presenting protein that binds self and non-self lipid and glycolipid antigens and presents them to T-cell receptors on natural killer T-cells. [UniProt]
Calculated Mw	37 kDa

Images



ARG21110 anti-CD1 antibody [76-7-4] (PE) FACS image

Flow Cytometry: Porcine peripheral blood lymphocytes stained with [ARG21110](#) anti-CD1 antibody [76-7-4] (PE) and [ARG21112](#) anti-CD3ε antibody [PPT3] (FITC).