

ARG21141 anti-CD5 antibody [f43] (PE)

Package: 50 µg
Store at: 4°C

Summary

Product Description	PE-conjugated Mouse Monoclonal antibody [f43] recognizes CD5
Tested Reactivity	Cat
Tested Application	ELISA, FACS, IHC-Fr
Specificity	Feline/Lion CD5. The clone f43 is useful as a pan T cell marker.
Host	Mouse
Clonality	Monoclonal
Clone	f43
Isotype	IgG1, kappa
Target Name	CD5
Species	Cat
Immunogen	Feline T cells
Conjugation	PE
Alternate Names	CD antigen CD5; Lymphocyte antigen T1/Leu-1; LEU1; T-cell surface glycoprotein CD5; T1

Application Instructions

Application table	Application	Dilution
	ELISA	Assay-dependent
	FACS	< 0.2 µg/10 ⁶ cells
	IHC-Fr	Assay-dependent
Application Note	* The dilutions indicate recommended starting dilutions and the optimal dilutions or concentrations should be determined by the scientist.	

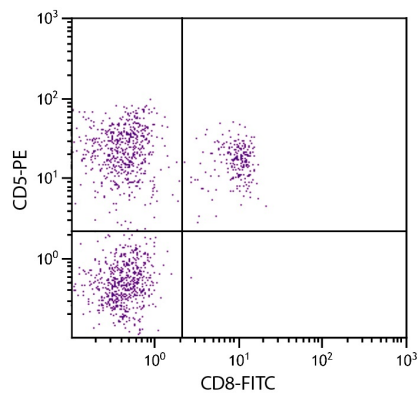
Properties

Form	Liquid
Buffer	PBS, 0.1% Sodium azide and Sucrose.
Preservative	0.1% Sodium azide
Stabilizer	Sucrose
Concentration	0.1 mg/ml
Storage instruction	Aliquot and store in the dark at 2-8°C. Keep protected from prolonged exposure to light. Avoid repeated freeze/thaw cycles. Suggest spin the vial prior to opening. The antibody solution should be gently mixed before use.

Bioinformation

Gene Symbol	CD5
Gene Full Name	CD5 molecule
Function	May act as a receptor in regulating T-cell proliferation. [UniProt]
Calculated Mw	55 kDa
PTM	Phosphorylated on tyrosine residues by LYN; this creates binding sites for PTPN6/SHP-1.

Images



ARG21141 anti-CD5 antibody [f43] (PE) FACS image

Flow Cytometry: Feline peripheral blood lymphocytes stained with [ARG21141](#) anti-CD5 antibody [f43] (PE) and [ARG21143](#) anti-CD8 antibody [fCD8] (FITC).