

ARG21154 anti-CD3 antibody [CT-3] (PE-Cyanine 5)

Package: 50 µg
Store at: 4°C

Summary

Product Description	PE-Cyanine 5-conjugated Mouse Monoclonal antibody [CT-3] recognizes CD3
Tested Reactivity	Chk
Tested Application	FACS, IHC-Fr, IHC-P
Specificity	Chicken CD3. The clone CT-3 recognizes a complex of at least three polypeptides of Mr 20, 19, and 17 kDa (two of which are N-glycosylated) on chicken T cells. The antibody also coprecipitates a polypeptide of 90 kDa from digitonin solubilized T cell lysates, which can be reduced to two polypeptides of Mr 50 and 40 kDa.
Host	Mouse
Clonality	Monoclonal
Clone	CT-3
Isotype	IgG1, kappa
Target Name	CD3
Antigen Species	Chicken
Immunogen	Chicken thymocytes and Ig- blood mononuclear cells
Conjugation	PE-Cyanine 5
Alternate Names	T-cell receptor T3 delta chain; T3D; IMD19; CD3-DELTA; CD antigen CD3d; T-cell surface glycoprotein CD3 delta chain

Application Instructions

Application table	Application	Dilution
	FACS	< 0.2 µg/10 ⁶ cells
	IHC-Fr	Assay-dependent
	IHC-P	Assay-dependent
Application Note	* The dilutions indicate recommended starting dilutions and the optimal dilutions or concentrations should be determined by the scientist.	
Calculated Mw	19 kDa	

Properties

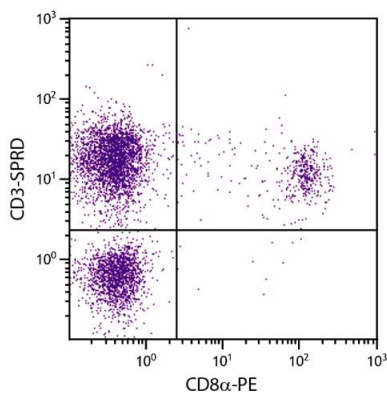
Form	Liquid
Buffer	PBS, 0.1% Sodium azide and Sucrose.
Preservative	0.1% Sodium azide
Stabilizer	Sucrose

Concentration	0.1 mg/ml
Storage instruction	Aliquot and store in the dark at 2-8°C. Keep protected from prolonged exposure to light. Avoid repeated freeze/thaw cycles. Suggest spin the vial prior to opening. The antibody solution should be gently mixed before use.
Note	For laboratory research only, not for drug, diagnostic or other use.

Bioinformation

Gene Symbol	CD3D
Gene Full Name	CD3d molecule, delta (CD3-TCR complex)
Background	The protein encoded by this gene is part of the T-cell receptor/CD3 complex (TCR/CD3 complex) and is involved in T-cell development and signal transduction. The encoded membrane protein represents the delta subunit of the CD3 complex, and along with four other CD3 subunits, binds either TCR alpha/beta or TCR gamma/delta to form the TCR/CD3 complex on the surface of T-cells. Defects in this gene are a cause of severe combined immunodeficiency autosomal recessive T-cell-negative/B-cell-positive/NK-cell-positive (SCIDBNK). Two transcript variants encoding different isoforms have been found for this gene. Other variants may also exist, but the full-length natures of their transcripts has yet to be defined. [provided by RefSeq, Feb 2009]
Function	The CD3 complex mediates signal transduction. [UniProt]
Highlight	Related products: CD3 antibodies ; CD3 ELISA Kits ; CD3 Duos / Panels ; CD3 recombinant proteins ; Anti-Mouse IgG secondary antibodies ; Related news: New antibody panels and duos for Tumor immune microenvironment Tumor-Infiltrating Lymphocytes (TILs) Exploring Antiviral Immune Response

Images



ARG21154 anti-CD3 antibody [CT-3] (PE-Cyanine 5) FACS image

Flow Cytometry: Chicken peripheral blood lymphocytes stained with ARG21154 anti-CD3 antibody [CT-3] (PE-Cyanine 5) and [ARG21162](#) anti-CD8a antibody [CT-8] (PE).