

ARG21177 anti-TCR alpha + TCR beta antibody [TCR-3] (PE-Cyanine 5)

Package: 50 µg
Store at: 4°C

Summary

Product Description	PE-Cyanine 5-conjugated Mouse Monoclonal antibody [TCR-3] recognizes TCR alpha + TCR beta
Tested Reactivity	Chk
Tested Application	Depletion, FACS, IHC-Fr
Specificity	The clone TCR-3 precipitates a CD3-associated heterodimer of 88 kDa (two bands of 48 kDa and 40 kDa upon reduction) on chicken peripheral blood T cells. Deglycosylation of the heterodimer yields two polypeptides of 34 kDa and 31 kDa.
Host	Mouse
Clonality	Monoclonal
Clone	TCR-3
Isotype	IgG1, kappa
Target Name	TCR alpha + TCR beta
Species	Chicken
Immunogen	CD3+ TCR1- TCR2- Ia- chicken blood mononuclear cells
Conjugation	PE-Cyanine 5
Alternate Names	TCR alpha: IMD7; TCRA TCR beta: TCRB

Application Instructions

Application table	Application	Dilution
	Depletion	Assay-dependent
	FACS	< 0.2 µg/10 ⁶ cells
	IHC-Fr	Assay-dependent
Application Note	* The dilutions indicate recommended starting dilutions and the optimal dilutions or concentrations should be determined by the scientist.	

Properties

Form	Liquid
Buffer	PBS, 0.1% Sodium azide and Sucrose.
Preservative	0.1% Sodium azide
Stabilizer	Sucrose
Concentration	0.1 mg/ml
Storage instruction	Aliquot and store in the dark at 2-8°C. Keep protected from prolonged exposure to light. Avoid repeated freeze/thaw cycles. Suggest spin the vial prior to opening. The antibody solution should be

gently mixed before use.

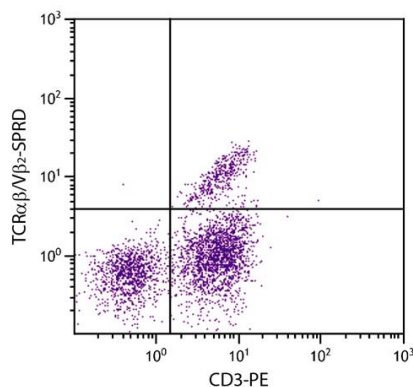
Note

For laboratory research only, not for drug, diagnostic or other use.

Bioinformation

Gene Symbol	TRA; TRB
Gene Full Name	T cell receptor alpha locus; T cell receptor beta locus
Background	<p>TCR beta: T cell receptors recognize foreign antigens which have been processed as small peptides and bound to major histocompatibility complex (MHC) molecules at the surface of antigen presenting cells (APC). Each T cell receptor is a dimer consisting of one alpha and one beta chain or one delta and one gamma chain. In a single cell, the T cell receptor loci are rearranged and expressed in the order delta, gamma, beta, and alpha. If both delta and gamma rearrangements produce functional chains, the cell expresses delta and gamma. If not, the cell proceeds to rearrange the beta and alpha loci. This region represents the germline organization of the T cell receptor beta locus. The beta locus includes V (variable), J (joining), diversity (D), and C (constant) segments. During T cell development, the beta chain is synthesized by a recombination event at the DNA level joining a D segment with a J segment; a V segment is then joined to the D-J gene. The C segment is later joined by splicing at the RNA level. Recombination of many different V segments with several J segments provides a wide range of antigen recognition. Additional diversity is attained by junctional diversity, resulting from the random addition of nucleotides by terminal deoxynucleotidyltransferase. Several V segments and one J segment of the beta locus are known to be incapable of encoding a protein and are considered pseudogenes. The beta locus also includes eight trypsinogen genes, three of which encode functional proteins and five of which are pseudogenes. Chromosomal abnormalities involving the T-cell receptor beta locus have been associated with T-cell lymphomas. [provided by RefSeq, Jul 2008]</p>

Images



ARG21177 anti-TCR alpha + TCR beta antibody [TCR-3] (PE-Cyanine 5) FACS image

Flow Cytometry: Chicken peripheral blood lymphocytes stained with ARG21177 anti-TCR alpha + TCR beta antibody [TCR-3] (PE-Cyanine 5) and [ARG21153](#) anti-CD3 antibody [CT-3] (PE).