

ARG21186 anti-CD45 antibody [LT40]

Package: 100 µg
Store at: -20°C

Summary

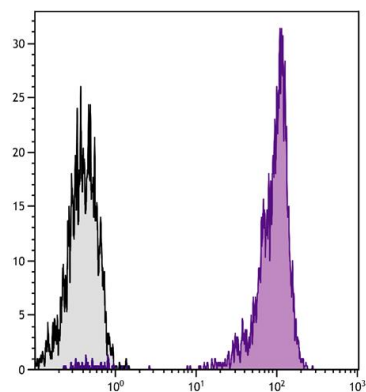
Product Description	Mouse Monoclonal antibody [LT40] recognizes CD45
Tested Reactivity	Chk
Tested Application	FACS, IHC-Fr, IHC-P, IHC-Wmt, IP
Specificity	The ability of The clone LT40 to discriminate the CD45low subpopulation provides a suitable marker for the CD3-CD4-CD8low immediate precursors to the CD3-CD4+CD8+ thymocytes.
Host	Mouse
Clonality	Monoclonal
Clone	LT40
Isotype	IgM, kappa
Target Name	CD45
Species	Chicken
Immunogen	Chicken bursal lymphocytes
Conjugation	Un-conjugated

Application Instructions

Application table	Application	Dilution
	FACS	Assay-dependent
	IHC-Fr	Assay-dependent
	IHC-P	Assay-dependent
	IHC-Wmt	Assay-dependent
	IP	Assay-dependent
Application Note	* The dilutions indicate recommended starting dilutions and the optimal dilutions or concentrations should be determined by the scientist.	

Properties

Form	Liquid
Buffer	BBS (pH 8.2)
Concentration	0.5 mg/ml
Storage instruction	For continuous use, store undiluted antibody at 2-8°C for up to a week. For long-term storage, aliquot and store at -20°C. Storage in frost free freezers is not recommended. Avoid repeated freeze/thaw cycles. Suggest spin the vial prior to opening. The antibody solution should be gently mixed before use.
Note	For laboratory research only, not for drug, diagnostic or other use.



ARG21186 anti-CD45 antibody [LT40] FACS image

Flow Cytometry: Chicken peripheral blood lymphocytes stained with ARG21186 anti-CD45 antibody [LT40] followed by [ARG21518](#) Goat anti-Mouse IgM antibody (FITC) (pre-adsorbed).