

ARG21199 anti-Ia Antigen antibody [Cla] (PE)

Package: 50 µg
Store at: 4°C

Summary

Product Description	PE-conjugated Mouse Monoclonal antibody [Cla] recognizes Ia Antigen
Tested Reactivity	Chk, Duck, Pgn
Tested Application	BL, FACS, ICC/IF, IHC-Fr
Specificity	Chicken/Quail/Dove/Pigeon/Duck Ia.
Host	Mouse
Clonality	Monoclonal
Clone	Cla
Isotype	IgM, kappa
Target Name	Ia Antigen
Species	Chicken
Immunogen	Splenic leukocytes from an outbred nine-week-old chicken
Conjugation	PE

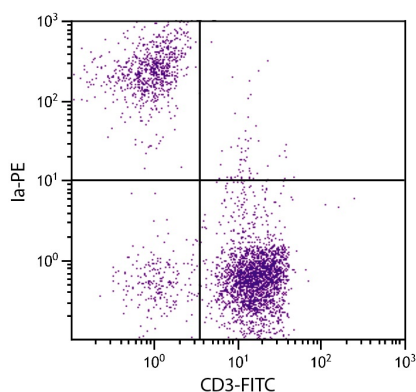
Application Instructions

Application table	Application	Dilution
	BL	Assay-dependent
	FACS	< 0.2 µg/10 ⁶ cells
	ICC/IF	Assay-dependent
	IHC-Fr	Assay-dependent
Application Note	* The dilutions indicate recommended starting dilutions and the optimal dilutions or concentrations should be determined by the scientist.	

Properties

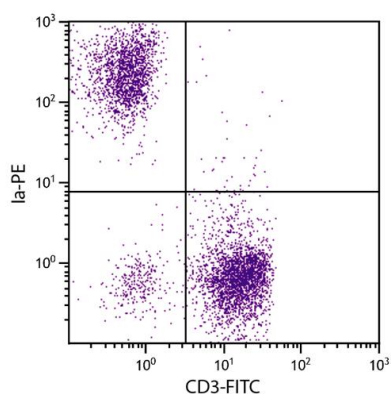
Form	Liquid
Buffer	PBS, 0.1% Sodium azide and Sucrose.
Preservative	0.1% Sodium azide
Stabilizer	Sucrose
Concentration	0.1 mg/ml
Storage instruction	Aliquot and store in the dark at 2-8°C. Keep protected from prolonged exposure to light. Avoid repeated freeze/thaw cycles. Suggest spin the vial prior to opening. The antibody solution should be gently mixed before use.

Images



ARG21199 anti-Ia Antigen antibody [Cia] (PE) FACS image

Flow Cytometry: Chicken peripheral blood mononuclear cells stained with [ARG21199](#) anti-Ia Antigen antibody [Cia] (PE) and [ARG21151](#) anti-CD3 epsilon antibody [CT-3] (FITC).



ARG21199 anti-Ia Antigen antibody [Cia] (PE) FACS image

Flow Cytometry: Chicken peripheral blood lymphocytes stained with ARG21199 anti-Ia Antigen antibody [Cia] (PE) and [ARG21151](#) anti-CD3 epsilon antibody [CT-3] (FITC).