

ARG21205 anti-MHC Class II antibody [2G11] (FITC)

Package: 100 µg
Store at: 4°C

Summary

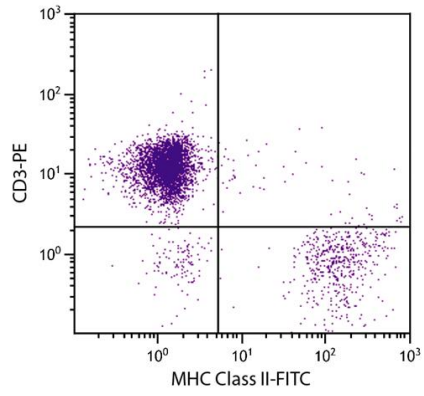
Product Description	FITC-conjugated Mouse Monoclonal antibody [2G11] recognizes MHC Class II
Tested Reactivity	Chk
Tested Application	EM, FACS, IHC-Fr
Specificity	Chicken MHC class II β-chain.
Host	Mouse
Clonality	Monoclonal
Clone	2G11
Isotype	IgG1, kappa
Target Name	MHC Class II
Antigen Species	Chicken
Conjugation	FITC

Application Instructions

Application table	Application	Dilution
	EM	Assay-dependent
	FACS	< 1 µg/10 ⁶ cells
	IHC-Fr	Assay-dependent
Application Note	* The dilutions indicate recommended starting dilutions and the optimal dilutions or concentrations should be determined by the scientist.	

Properties

Form	Liquid
Buffer	PBS and 0.1% Sodium azide.
Preservative	0.1% Sodium azide
Concentration	0.5 mg/ml
Storage instruction	Aliquot and store in the dark at 2-8°C. Keep protected from prolonged exposure to light. Avoid repeated freeze/thaw cycles. Suggest spin the vial prior to opening. The antibody solution should be gently mixed before use.
Note	For laboratory research only, not for drug, diagnostic or other use.



ARG21205 anti-MHC Class II antibody [2G11] (FITC) FACS image

Flow Cytometry: Chicken peripheral blood lymphocytes stained with ARG21205 anti-MHC Class II antibody [2G11] (FITC) and [ARG21153](#) anti-CD3 antibody [CT-3] (PE).