

ARG21207 anti-MHC Class II antibody [2G11] (PE)

Package: 50 µg
Store at: 4°C

Summary

Product Description	PE-conjugated Mouse Monoclonal antibody [2G11] recognizes MHC Class II
Tested Reactivity	Chk
Tested Application	EM, FACS, IHC-Fr, Puri
Specificity	Chicken MHC class II β-chain.
Host	Mouse
Clonality	Monoclonal
Clone	2G11
Isotype	IgG1, kappa
Target Name	MHC Class II
Antigen Species	Chicken
Conjugation	PE

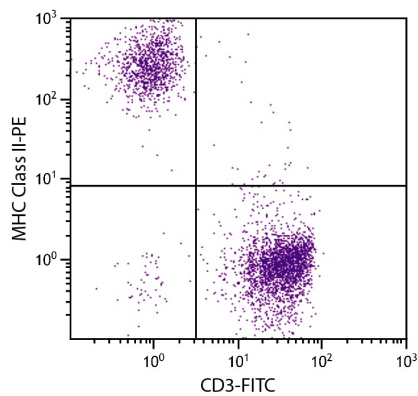
Application Instructions

Application table	Application	Dilution
	EM	Assay-dependent
	FACS	< 0.2 µg/10 ⁶ cells
	IHC-Fr	Assay-dependent
	Puri	Assay-dependent

Application Note * The dilutions indicate recommended starting dilutions and the optimal dilutions or concentrations should be determined by the scientist.

Properties

Form	Liquid
Buffer	PBS, 0.1% Sodium azide and Sucrose.
Preservative	0.1% Sodium azide
Stabilizer	Sucrose
Concentration	0.1 mg/ml
Storage instruction	Aliquot and store in the dark at 2-8°C. Keep protected from prolonged exposure to light. Avoid repeated freeze/thaw cycles. Suggest spin the vial prior to opening. The antibody solution should be gently mixed before use.
Note	For laboratory research only, not for drug, diagnostic or other use.



ARG21207 anti-MHC Class II antibody [2G11] (PE) FACS image

Flow Cytometry: Chicken peripheral blood mononuclear cells stained with [ARG21207](#) anti-MHC Class II antibody [2G11] (PE) and [ARG21151](#) anti-CD3 antibody [CT-3] (FITC).