

## ARG21209 anti-beta 2 Microglobulin antibody [F21-21] (FITC)

Package: 100 µg  
Store at: 4°C

### Summary

Product Description	FITC-conjugated Mouse Monoclonal antibody [F21-21] recognizes beta 2 Microglobulin
Tested Reactivity	Chk, Turkey
Tested Application	FACS, ICC/IF, WB
Specificity	Chicken/Turkey β2-Microglobulin. The clone F21-21 also reacts with turkey β2-microglobulin.
Host	Mouse
Clonality	Monoclonal
Clone	F21-21
Isotype	IgG1, kappa
Target Name	beta 2 Microglobulin
Species	Chicken
Immunogen	Affinity purified chicken MHC-I molecules
Conjugation	FITC
Alternate Names	Beta-2-microglobulin

### Application Instructions

Application table	Application	Dilution
	FACS	< 1 µg/10 <sup>6</sup> cells
	ICC/IF	Assay-dependent
	WB	Assay-dependent
Application Note	* The dilutions indicate recommended starting dilutions and the optimal dilutions or concentrations should be determined by the scientist.	

### Properties

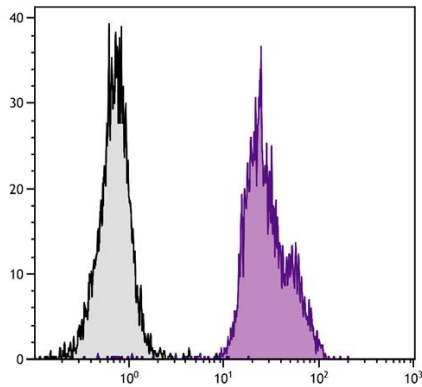
Form	Liquid
Buffer	PBS and 0.1% Sodium azide.
Preservative	0.1% Sodium azide
Concentration	0.5 mg/ml
Storage instruction	Aliquot and store in the dark at 2-8°C. Keep protected from prolonged exposure to light. Avoid repeated freeze/thaw cycles. Suggest spin the vial prior to opening. The antibody solution should be gently mixed before use.
Note	For laboratory research only, not for drug, diagnostic or other use.

## Bioinformation

---

Gene Symbol	B2M
Gene Full Name	beta-2-microglobulin
Background	This gene encodes a serum protein found in association with the major histocompatibility complex (MHC) class I heavy chain on the surface of nearly all nucleated cells. The protein has a predominantly beta-pleated sheet structure that can form amyloid fibrils in some pathological conditions. The encoded antimicrobial protein displays antibacterial activity in amniotic fluid. A mutation in this gene has been shown to result in hypercatabolic hypoproteinemia.[provided by RefSeq, Aug 2014]
Function	Component of the class I major histocompatibility complex (MHC). Involved in the presentation of peptide antigens to the immune system. [UniProt]
Calculated Mw	14 kDa
PTM	Glycation of Ile-21 is observed in long-term hemodialysis patients.

## Images



ARG21209 anti-beta 2 Microglobulin antibody [F21-21] (FITC) FACS image

Flow Cytometry: Chicken peripheral blood lymphocytes stained with ARG21209 anti-beta 2 Microglobulin antibody [F21-21] (FITC).