

ARG21215 anti-Bu1a antibody [21-1A4] (PE)

Package: 50 µg
Store at: 4°C

Summary

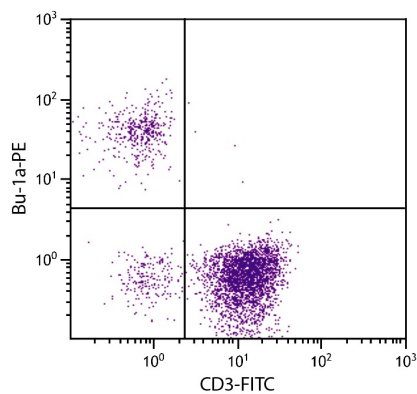
Product Description	PE-conjugated Mouse Monoclonal antibody [21-1A4] recognizes Bu1a
Tested Reactivity	Chk
Tested Application	FACS, ICC/IF, IHC-Fr
Specificity	Chicken Bu-1a. The clone 21-1A4 does not react with cells from CHA and H.B14ab strains by immunofluorescence.
Host	Mouse
Clonality	Monoclonal
Clone	21-1A4
Isotype	IgG1, kappa
Target Name	Bu1a
Species	Chicken
Immunogen	Bursa cells from one-day-old H.B15 (Bu-1a/b) strain chickens
Conjugation	PE

Application Instructions

Application table	Application	Dilution
	FACS	< 0.2 µg/10 ⁶ cells
	ICC/IF	Assay-dependent
	IHC-Fr	Assay-dependent
Application Note	* The dilutions indicate recommended starting dilutions and the optimal dilutions or concentrations should be determined by the scientist.	

Properties

Form	Liquid
Buffer	PBS, 0.1% Sodium azide and Sucrose.
Preservative	0.1% Sodium azide
Stabilizer	Sucrose
Concentration	0.1 mg/ml
Storage instruction	Aliquot and store in the dark at 2-8°C. Keep protected from prolonged exposure to light. Avoid repeated freeze/thaw cycles. Suggest spin the vial prior to opening. The antibody solution should be gently mixed before use.
Note	For laboratory research only, not for drug, diagnostic or other use.



ARG21215 anti-Bu1a antibody [21-1A4] (PE) FACS image

Flow Cytometry: Chicken peripheral blood mononuclear cells stained with [ARG21215](#) anti-Bu1a antibody [21-1A4] (PE) and [ARG21151](#) anti-CD3 epsilon antibody [CT-3] (FITC).