

ARG21217
anti-Bu1b antibody [5-11G2] (FITC)Package: 250 µg
Store at: 4°C

Summary

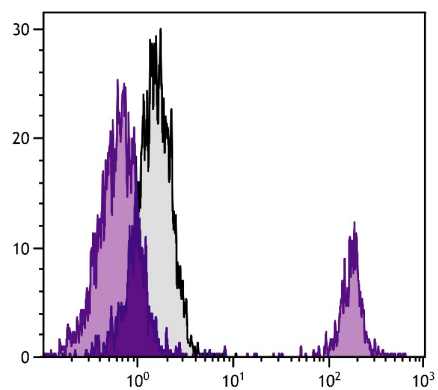
Product Description	FITC-conjugated Mouse Monoclonal antibody [5-11G2] recognizes Bu1b
Tested Reactivity	Chk
Tested Application	FACS, ICC/IF, IHC-Fr
Specificity	Chicken Bu-1b. The clone 5-11G2 reacts with lymphoid cells from CHA and H.B14Ab strains but does not react with cells from H.B14Aa
Host	Mouse
Clonality	Monoclonal
Clone	5-11G2
Isotype	IgG1, kappa
Target Name	Bu1b
Species	Chicken
Immunogen	Bursa cells from two- to five-week-old CHA (Bu-1b) strain chickens
Conjugation	FITC

Application Instructions

Application table	Application	Dilution
	FACS	< 1 µg/10 ⁶ cells
	ICC/IF	Assay-dependent
	IHC-Fr	Assay-dependent
Application Note	* The dilutions indicate recommended starting dilutions and the optimal dilutions or concentrations should be determined by the scientist.	

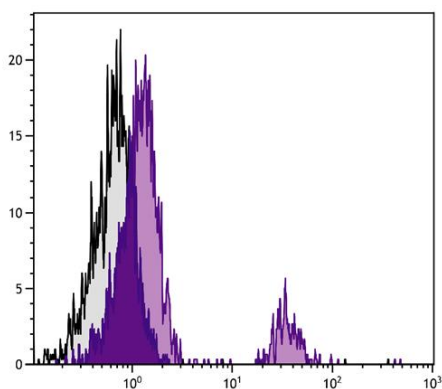
Properties

Form	Liquid
Buffer	PBS and 0.1% Sodium azide.
Preservative	0.1% Sodium azide
Concentration	0.5 mg/ml
Storage instruction	Aliquot and store in the dark at 2-8°C. Keep protected from prolonged exposure to light. Avoid repeated freeze/thaw cycles. Suggest spin the vial prior to opening. The antibody solution should be gently mixed before use.
Note	For laboratory research only, not for drug, diagnostic or other use.



ARG21217 anti-Bu1b antibody [5-11G2] (FITC) FACS image

Flow Cytometry: Chicken peripheral blood mononuclear cells stained with ARG21217 anti-Bu1b antibody [5-11G2] (FITC).



ARG21217 anti-Bu1b antibody [5-11G2] (FITC) FACS image

Flow Cytometry: Chicken peripheral blood lymphocytes stained with ARG21217 anti-Bu1b antibody [5-11G2] (FITC).