

ARG21288 anti-CD49d / LPAM1 / Integrin alpha 4 antibody [7.2] (FITC)

Package: 50 tests
Store at: 4°C

Summary

| | |
|---------------------|---|
| Product Description | FITC-conjugated Mouse Monoclonal antibody [7.2] recognizes CD49d / LPAM1 / Integrin alpha 4 |
| Tested Reactivity | Hu |
| Tested Application | FACS, ICC/IF, WB |
| Specificity | Human CD49d. |
| Host | Mouse |
| Clonality | Monoclonal |
| Clone | 7.2 |
| Isotype | IgG1, kappa |
| Target Name | CD49d / LPAM1 / Integrin alpha 4 |
| Species | Human |
| Conjugation | FITC |
| Alternate Names | CD49 antigen-like family member D; VLA-4 subunit alpha; CD49D; Integrin alpha-IV; CD antigen CD49d; Integrin alpha-4; IA4 |

Application Instructions

| Application table | Application | Dilution |
|-------------------|--|-----------------------------|
| | FACS | 10 µl/10 ⁶ cells |
| | ICC/IF | Assay-dependent |
| | WB | Assay-dependent |
| Application Note | * The dilutions indicate recommended starting dilutions and the optimal dilutions or concentrations should be determined by the scientist. | |

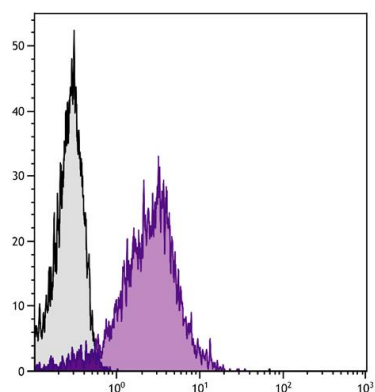
Properties

| | |
|---------------------|--|
| Form | Liquid |
| Buffer | PBS and 0.1% Sodium azide. |
| Preservative | 0.1% Sodium azide |
| Storage instruction | Aliquot and store in the dark at 2-8°C. Keep protected from prolonged exposure to light. Avoid repeated freeze/thaw cycles. Suggest spin the vial prior to opening. The antibody solution should be gently mixed before use. |
| Note | For laboratory research only, not for drug, diagnostic or other use. |

Bioinformation

| | |
|----------------|---|
| Database links | GeneID: 3676 Human Swiss-port # P13612 Human |
| Gene Symbol | ITGA4 |
| Gene Full Name | integrin, alpha 4 (antigen CD49D, alpha 4 subunit of VLA-4 receptor) |
| Background | The product of this gene belongs to the integrin alpha chain family of proteins. Integrins are heterodimeric integral membrane proteins composed of an alpha chain and a beta chain. This gene encodes an alpha 4 chain. Unlike other integrin alpha chains, alpha 4 neither contains an I-domain, nor undergoes disulfide-linked cleavage. Alpha 4 chain associates with either beta 1 chain or beta 7 chain. [provided by RefSeq, Jul 2008] |
| Function | Integrins alpha-4/beta-1 (VLA-4) and alpha-4/beta-7 are receptors for fibronectin. They recognize one or more domains within the alternatively spliced CS-1 and CS-5 regions of fibronectin. They are also receptors for VCAM1. Integrin alpha-4/beta-1 recognizes the sequence Q-I-D-S in VCAM1. Integrin alpha-4/beta-7 is also a receptor for MADCAM1. It recognizes the sequence L-D-T in MADCAM1. On activated endothelial cells integrin VLA-4 triggers homotypic aggregation for most VLA-4-positive leukocyte cell lines. It may also participate in cytolytic T-cell interactions with target cells. [UniProt] |
| Calculated Mw | 115 kDa |
| PTM | Phosphorylation on Ser-1027 inhibits PXN binding. |

Images



ARG21288 anti-CD49d / LPAM1 / Integrin alpha 4 antibody [7.2] (FITC) FACS image

Flow Cytometry: Human peripheral blood lymphocytes stained with ARG21288 anti-CD49d / LPAM1 / Integrin alpha 4 antibody [7.2] (FITC).