

## ARG21289 anti-CD49d / LPAM1 / Integrin alpha 4 antibody [7.2] (PE)

Package: 50 tests  
Store at: 4°C

### Summary

Product Description	PE-conjugated Mouse Monoclonal antibody [7.2] recognizes CD49d / LPAM1 / Integrin alpha 4
Tested Reactivity	Hu
Tested Application	FACS, ICC/IF, WB
Specificity	Human CD49d.
Host	Mouse
Clonality	Monoclonal
Clone	7.2
Isotype	IgG1, kappa
Target Name	CD49d / LPAM1 / Integrin alpha 4
Species	Human
Conjugation	PE
Alternate Names	CD49 antigen-like family member D; VLA-4 subunit alpha; CD49D; Integrin alpha-IV; CD antigen CD49d; Integrin alpha-4; IA4

### Application Instructions

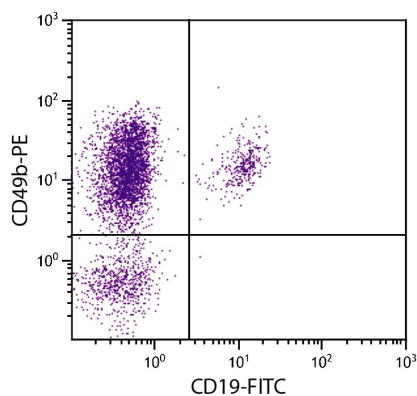
Application table	Application	Dilution
	FACS	10 µl/10 <sup>6</sup> cells
	ICC/IF	Assay-dependent
	WB	Assay-dependent
Application Note	* The dilutions indicate recommended starting dilutions and the optimal dilutions or concentrations should be determined by the scientist.	

### Properties

Form	Liquid
Buffer	PBS, 0.1% Sodium azide and Sucrose.
Preservative	0.1% Sodium azide
Stabilizer	Sucrose
Storage instruction	Aliquot and store in the dark at 2-8°C. Keep protected from prolonged exposure to light. Avoid repeated freeze/thaw cycles. Suggest spin the vial prior to opening. The antibody solution should be gently mixed before use.
Note	For laboratory research only, not for drug, diagnostic or other use.

Database links	<a href="#">GeneID: 3676 Human</a> <a href="#">Swiss-port # P13612 Human</a>
Gene Symbol	ITGA4
Gene Full Name	integrin, alpha 4 (antigen CD49D, alpha 4 subunit of VLA-4 receptor)
Background	The product of this gene belongs to the integrin alpha chain family of proteins. Integrins are heterodimeric integral membrane proteins composed of an alpha chain and a beta chain. This gene encodes an alpha 4 chain. Unlike other integrin alpha chains, alpha 4 neither contains an I-domain, nor undergoes disulfide-linked cleavage. Alpha 4 chain associates with either beta 1 chain or beta 7 chain. [provided by RefSeq, Jul 2008]
Function	Integrins alpha-4/beta-1 (VLA-4) and alpha-4/beta-7 are receptors for fibronectin. They recognize one or more domains within the alternatively spliced CS-1 and CS-5 regions of fibronectin. They are also receptors for VCAM1. Integrin alpha-4/beta-1 recognizes the sequence Q-I-D-S in VCAM1. Integrin alpha-4/beta-7 is also a receptor for MADCAM1. It recognizes the sequence L-D-T in MADCAM1. On activated endothelial cells integrin VLA-4 triggers homotypic aggregation for most VLA-4-positive leukocyte cell lines. It may also participate in cytolytic T-cell interactions with target cells. [UniProt]
Calculated Mw	115 kDa
PTM	Phosphorylation on Ser-1027 inhibits PXN binding.

## Images



ARG21289 anti-CD49d / LPAM1 / Integrin alpha 4 antibody [7.2] (PE)  
FACS image

Flow Cytometry: Human peripheral blood lymphocytes stained with [ARG21289](#) anti-CD49d / LPAM1 / Integrin alpha 4 antibody [7.2] (PE) and [ARG21258](#) anti-CD19 antibody [SJ25-C1] (FITC).