

## ARG21293 anti-CD54 / ICAM1 antibody [15.2] (PE)

Package: 50 tests  
Store at: 4°C

### Summary

Product Description	PE-conjugated Mouse Monoclonal antibody [15.2] recognizes CD54 / ICAM1
Tested Reactivity	Hu, Pig
Tested Application	BL, FACS, ICC/IF, IHC-Fr, Neut, WB
Specificity	Human/Porcine CD54.
Host	Mouse
Clonality	Monoclonal
Clone	15.2
Isotype	IgG1, kappa
Target Name	CD54 / ICAM1
Species	Human
Immunogen	Rheumatoid synovial cells and human monocytes
Conjugation	PE
Alternate Names	CD54; CD antigen CD54; BB2; P3.58; Intercellular adhesion molecule 1; Major group rhinovirus receptor; ICAM-1

### Application Instructions

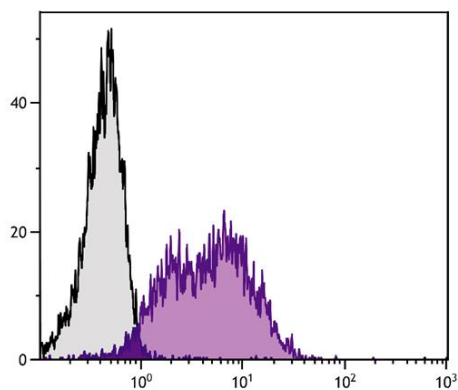
Application table	Application	Dilution
	BL	Assay-dependent
	FACS	10 µl/10 <sup>6</sup> cells
	ICC/IF	Assay-dependent
	IHC-Fr	Assay-dependent
	Neut	Assay-dependent
	WB	Assay-dependent
	Application Note	* The dilutions indicate recommended starting dilutions and the optimal dilutions or concentrations should be determined by the scientist.

### Properties

Form	Liquid
Buffer	PBS, 0.1% Sodium azide and Sucrose.
Preservative	0.1% Sodium azide
Stabilizer	Sucrose

Storage instruction	Aliquot and store in the dark at 2-8°C. Keep protected from prolonged exposure to light. Avoid repeated freeze/thaw cycles. Suggest spin the vial prior to opening. The antibody solution should be gently mixed before use.
Note	For laboratory research only, not for drug, diagnostic or other use.
<b>Bioinformation</b>	
Database links	<a href="#">GeneID: 3383 Human</a> <a href="#">Swiss-port # P05362 Human</a>
Gene Symbol	ICAM1
Gene Full Name	intercellular adhesion molecule 1
Background	This gene encodes a cell surface glycoprotein which is typically expressed on endothelial cells and cells of the immune system. It binds to integrins of type CD11a / CD18, or CD11b / CD18 and is also exploited by Rhinovirus as a receptor. [provided by RefSeq, Jul 2008]
Function	ICAM proteins are ligands for the leukocyte adhesion protein LFA-1 (integrin alpha-L/beta-2). During leukocyte trans-endothelial migration, ICAM1 engagement promotes the assembly of endothelial apical cups through ARHGEF26/SGEF and RHOG activation (By similarity). [UniProt]
Research Area	Cell Biology and Cellular Response antibody; Developmental Biology antibody; Immune System antibody; Cytotoxic T Cell Surface Study antibody
Calculated Mw	58 kDa
PTM	Monoubiquitinated, which is promoted by MARCH9 and leads to endocytosis.

## Images



ARG21293 anti-CD54 / ICAM1 antibody [15.2] (PE) FACS image

Flow Cytometry: Human peripheral blood lymphocytes stained with ARG21293 anti-CD54 / ICAM1 antibody [15.2] (PE).