

ARG21353 anti-CD42b antibody [MM2/174] (FITC)

Package: 50 tests

Store at: 4°C

Summary

Product Description	FITC-conjugated Mouse Monoclonal antibody [MM2/174] recognizes CD42b
Tested Reactivity	Hu
Tested Application	FACS, ICC/IF, IHC-Fr, IHC-P, WB
Specificity	Human CD42b.
Host	Mouse
Clonality	Monoclonal
Clone	MM2/174
Isotype	IgG1, kappa
Target Name	CD42b
Antigen Species	Human
Immunogen	Human plasma membrane
Conjugation	FITC
Alternate Names	CD antigen CD42b; Antigen CD42b-alpha; DBPLT3; VWDP; CD42B; GP-Ib alpha; Glycoprotein Ibalpha; BDPLT1; BSS; CD42b-alpha; GPIbA; GPIb-alpha; Platelet glycoprotein Ib alpha chain; BDPLT3; GP1B

Application Instructions

Application table	Application	Dilution
	FACS	10 µl/10 ⁶ cells
	ICC/IF	Assay-dependent
	IHC-Fr	Assay-dependent
	IHC-P	Assay-dependent
	WB	Assay-dependent
Application Note	* The dilutions indicate recommended starting dilutions and the optimal dilutions or concentrations should be determined by the scientist.	
Calculated Mw	72 kDa	

Properties

Form	Liquid
Buffer	PBS and 0.1% Sodium azide.
Preservative	0.1% Sodium azide
Storage instruction	Aliquot and store in the dark at 2-8°C. Keep protected from prolonged exposure to light. Avoid repeated freeze/thaw cycles. Suggest spin the vial prior to opening. The antibody solution should be

gently mixed before use.

Note

For laboratory research only, not for drug, diagnostic or other use.

Bioinformation

Database links

[GeneID: 2811 Human](#)

[Swiss-port # P07359 Human](#)

Gene Symbol

GP1BA

Gene Full Name

glycoprotein Ib (platelet), alpha polypeptide

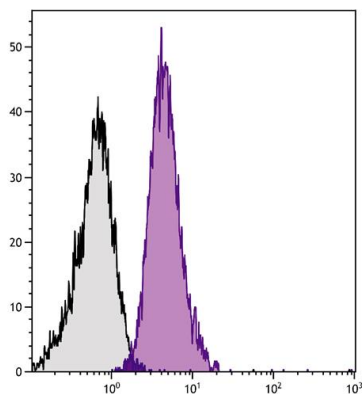
Background

Glycoprotein Ib (GP Ib) is a platelet surface membrane glycoprotein composed of a heterodimer, an alpha chain and a beta chain, that is linked by disulfide bonds. The Gp Ib functions as a receptor for von Willebrand factor (VWF). The complete receptor complex includes noncovalent association of the alpha and beta subunits with platelet glycoprotein IX and platelet glycoprotein V. The binding of the GP Ib-IX-V complex to VWF facilitates initial platelet adhesion to vascular subendothelium after vascular injury, and also initiates signaling events within the platelet that lead to enhanced platelet activation, thrombosis, and hemostasis. This gene encodes the alpha subunit. Mutations in this gene result in Bernard-Soulier syndromes and platelet-type von Willebrand disease. The coding region of this gene is known to contain a polymorphic variable number tandem repeat (VNTR) domain that is associated with susceptibility to nonarteritic anterior ischemic optic neuropathy. [provided by RefSeq, Oct 2013]

Function

GP-Ib, a surface membrane protein of platelets, participates in the formation of platelet plugs by binding to the A1 domain of vWF, which is already bound to the subendothelium. [UniProt]

Images



ARG21353 anti-CD42b antibody [MM2/174] (FITC) FACS image

Flow Cytometry: Human peripheral blood platelets stained with ARG21353 anti-CD42b antibody [MM2/174] (FITC).