

ARG21540 Goat anti-Mouse IgA antibody (FITC), pre-adsorbed

Package: 500 µg
Store at: 4°C

Summary

Product Description	FITC-conjugated Goat Polyclonal antibody recognizes Mouse IgA
Tested Reactivity	Ms
Tested Application	FACS, FLISA, ICC/IF, IHC-Fr, IHC-P, WB
Specificity	The antibody reacts with the heavy chain of Mouse IgA. The antibody is pre-adsorbed with Mouse IgG and IgM, so the antibody may not react with Mouse IgG and IgM, but may react with immunoglobulins from other species.
Host	Goat
Clonality	Polyclonal
Isotype	IgG
Target Name	IgA
Species	Mouse
Conjugation	FITC

Application Instructions

Pre Adsorbed	Mouse IgG and IgM.	
Application table	Application	Dilution
	FACS	< 1 µg/10 ⁶ cells
	FLISA	1:100 - 1:400
	ICC/IF	Assay-dependent
	IHC-Fr	Assay-dependent
	IHC-P	Assay-dependent
	WB	Assay-dependent
Application Note	* The dilutions indicate recommended starting dilutions and the optimal dilutions or concentrations should be determined by the scientist.	

Properties

Form	Liquid
Purification	Affinity purification with immunogen.
Buffer	PBS and 0.1% Sodium azide.
Preservative	0.1% Sodium azide
Concentration	1 mg/ml

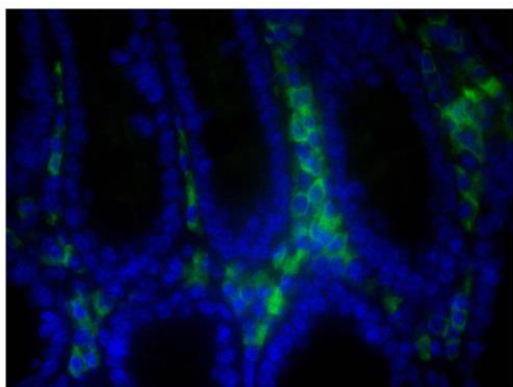
Storage instruction

Aliquot and store in the dark at 2-8°C. Keep protected from prolonged exposure to light. Avoid repeated freeze/thaw cycles. Suggest spin the vial prior to opening. The antibody solution should be gently mixed before use.

Note

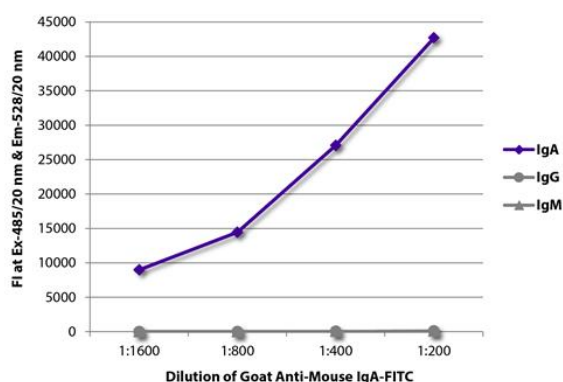
For laboratory research only, not for drug, diagnostic or other use.

Images



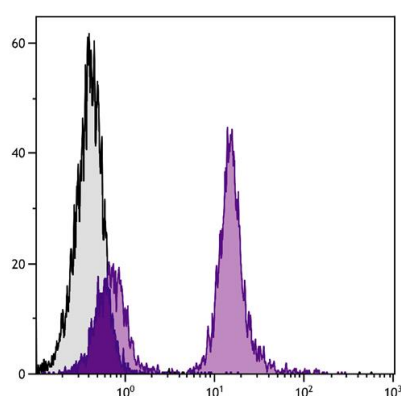
ARG21540 Goat anti-Mouse IgA antibody (FITC) (pre-adsorbed) IHC-P image

Immunohistochemistry: Paraffin-embedded BALB/c Mouse colon tissue stained with ARG21540 Goat anti-Mouse IgA antibody (FITC) (pre-adsorbed) followed by DAPI.



ARG21540 Goat anti-Mouse IgA antibody (FITC) (pre-adsorbed) FLISA image

FLISA: The plate was coated with purified Mouse IgA, IgG and IgM. Immunoglobulins were detected with serially diluted ARG21540 Goat anti-Mouse IgA antibody (FITC) (pre-adsorbed).



ARG21540 Goat anti-Mouse IgA antibody (FITC) (pre-adsorbed) FACS image

Flow Cytometry: BALB/c Mouse splenocytes stained with [ARG20858](#) anti-CD19 antibody [MB19-1] followed by ARG21540 Goat anti-Mouse IgA antibody (FITC) (pre-adsorbed).