

## ARG21549 Goat anti-Mouse Kappa Light Chain antibody (TRITC), pre-adsorbed

Package: 500 µg  
Store at: 4°C

### Summary

Product Description	TRITC-conjugated Goat Polyclonal antibody recognizes Mouse Kappa Light Chain
Tested Reactivity	Ms
Tested Application	FACS, FLISA, ICC/IF, IHC-Fr, IHC-P, WB
Specificity	The antibody reacts with Mouse kappa light chains. The antibody is pre-adsorbed with Mouse lambda light chains, so the antibody may not react with Mouse lambda light chains, but may react with kappa light chains from other species.
Host	Goat
Clonality	Polyclonal
Isotype	IgG
Target Name	Kappa Light Chain
Antigen Species	Mouse
Conjugation	TRITC

### Application Instructions

Pre Adsorbed	Mouse lambda light chains.														
Application table	<table><thead><tr><th>Application</th><th>Dilution</th></tr></thead><tbody><tr><td>FACS</td><td>Assay-dependent</td></tr><tr><td>FLISA</td><td>1:100 - 1:400</td></tr><tr><td>ICC/IF</td><td>Assay-dependent</td></tr><tr><td>IHC-Fr</td><td>Assay-dependent</td></tr><tr><td>IHC-P</td><td>Assay-dependent</td></tr><tr><td>WB</td><td>Assay-dependent</td></tr></tbody></table>	Application	Dilution	FACS	Assay-dependent	FLISA	1:100 - 1:400	ICC/IF	Assay-dependent	IHC-Fr	Assay-dependent	IHC-P	Assay-dependent	WB	Assay-dependent
Application	Dilution														
FACS	Assay-dependent														
FLISA	1:100 - 1:400														
ICC/IF	Assay-dependent														
IHC-Fr	Assay-dependent														
IHC-P	Assay-dependent														
WB	Assay-dependent														
Application Note	* The dilutions indicate recommended starting dilutions and the optimal dilutions or concentrations should be determined by the scientist.														

### Properties

Form	Liquid
Purification	Affinity purification with immunogen.
Buffer	PBS and 0.1% Sodium azide.
Preservative	0.1% Sodium azide
Concentration	1 mg/ml

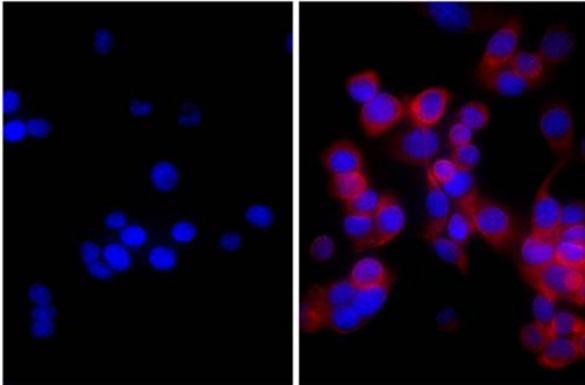
**Storage instruction**

Aliquot and store in the dark at 2-8°C. Keep protected from prolonged exposure to light. Avoid repeated freeze/thaw cycles. Suggest spin the vial prior to opening. The antibody solution should be gently mixed before use.

**Note**

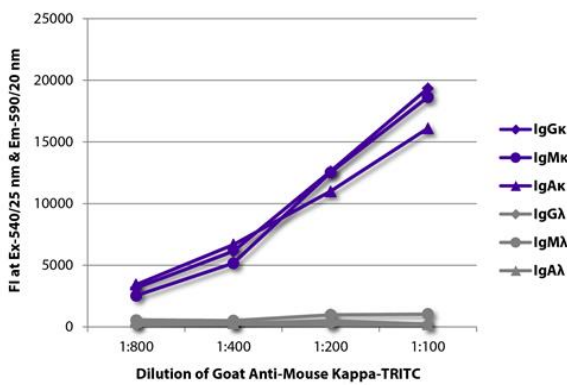
For laboratory research only, not for drug, diagnostic or other use.

**Images**



ARG21549 Goat anti-Mouse Kappa Light Chain antibody (TRITC) (pre-adsorbed) ICC/IF image

Immunofluorescence: Human pancreatic carcinoma cell line MIA PaCa-2 stained with anti-Cytokeratin 18 antibody (right) followed by ARG21549 Goat anti-Mouse Kappa Light Chain antibody (TRITC) (pre-adsorbed) and DAPI.



ARG21549 Goat anti-Mouse Kappa Light Chain antibody (TRITC) (pre-adsorbed) FLISA image

FLISA: The plate was coated with purified Mouse IgGκ, IgMκ, IgAκ, IgGλ, IgMλ and IgAλ. Immunoglobulins were detected with serially diluted ARG21549 Goat anti-Mouse Kappa Light Chain antibody (TRITC) (pre-adsorbed).