

## ARG21551

### Goat anti-Mouse Kappa Light Chain antibody (HRP), pre-adsorbed

Package: 500 µl

Store at: 4°C

#### Summary

Product Description	HRP-conjugated Goat Polyclonal antibody recognizes Mouse Kappa Light Chain
Tested Reactivity	Ms
Tested Application	ELISA, ELISPOT, FACS, FLISA, ICC/IF, IHC-Fr, IHC-P, WB
Specificity	The antibody reacts with Mouse kappa light chains. The antibody is pre-adsorbed with Mouse lambda light chains, so the antibody may not react with Mouse lambda light chains, but may react with kappa light chains from other species.
Host	Goat
Clonality	Polyclonal
Isotype	IgG
Target Name	Kappa Light Chain
Species	Mouse
Conjugation	HRP

#### Application Instructions

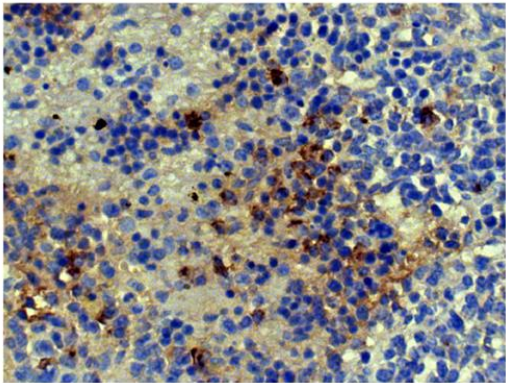
Pre Adsorbed	Mouse lambda light chains.	
Application table	Application	Dilution
	ELISA	1:4000 - 1:8000
	ELISPOT	Assay-dependent
	FACS	Assay-dependent
	FLISA	Assay-dependent
	ICC/IF	Assay-dependent
	IHC-Fr	Assay-dependent
	IHC-P	Assay-dependent
	WB	Assay-dependent
Application Note	* The dilutions indicate recommended starting dilutions and the optimal dilutions or concentrations should be determined by the scientist.	

#### Properties

Form	Liquid
Purification	Affinity purification with immunogen.
Buffer	50% PBS (pH 7.4) and 50% Glycerol

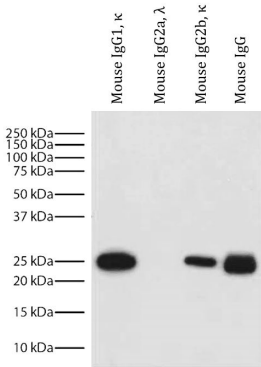
Stabilizer	50% Glycerol
Storage instruction	Aliquot and store in the dark at 2-8°C. Keep protected from prolonged exposure to light. Avoid repeated freeze/thaw cycles. Suggest spin the vial prior to opening. The antibody solution should be gently mixed before use.
Note	For laboratory research only, not for drug, diagnostic or other use.

Images



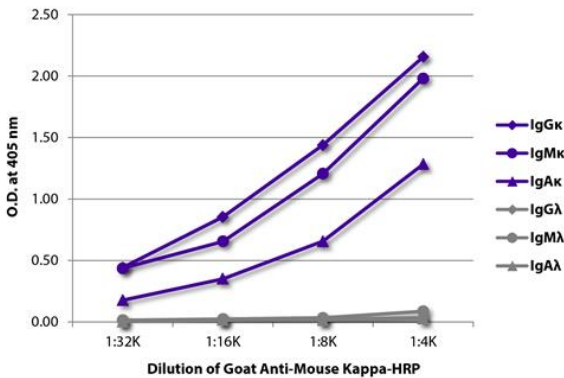
ARG21551 Goat anti-Mouse Kappa Light Chain antibody (HRP) (pre-adsorbed) IHC-P image

Immunohistochemistry: Paraffin-embedded Mouse spleen tissue stained with ARG21551 Goat anti-Mouse Kappa Light Chain antibody (HRP) (pre-adsorbed) followed by DAB and hematoxylin.



ARG21551 Goat anti-Mouse Kappa Light Chain antibody (HRP) (pre-adsorbed) WB image

Western blot: Mouse IgG1κ, Mouse IgG2aλ, Mouse IgG2bk and Mouse IgG (left to right), under reducing conditions. The blots were stained with ARG21551 Goat anti-Mouse Kappa Light Chain antibody (HRP) (pre-adsorbed) at 1:4000 dilution.



ARG21551 Goat anti-Mouse Kappa Light Chain antibody (HRP) (pre-adsorbed) ELISA image

ELISA: The plate was coated with purified Mouse IgGκ, IgMκ, IgAκ, IgGλ, IgMλ, and IgAλ. Immunoglobulins were detected with serially diluted ARG21551 Goat anti-Mouse Kappa Light Chain antibody (HRP) (pre-adsorbed).