

ARG21553

Goat anti-Mouse Kappa Light Chain antibody (Biotin), pre-adsorbed

Package: 500 µg

Store at: 4°C

Summary

Product Description	Biotin-conjugated Goat Polyclonal antibody recognizes Mouse Kappa Light Chain
Tested Reactivity	Ms
Tested Application	ELISA, ELISPOT, FACS, FLISA, ICC/IF, IHC-Fr, IHC-P, IP, WB
Specificity	The antibody reacts with Mouse kappa light chains. The antibody is pre-adsorbed with Mouse lambda light chains, so the antibody may not react with Mouse lambda light chains, but may react with kappa light chains from other species.
Host	Goat
Clonality	Polyclonal
Isotype	IgG
Target Name	Kappa Light Chain
Species	Mouse
Conjugation	Biotin

Application Instructions

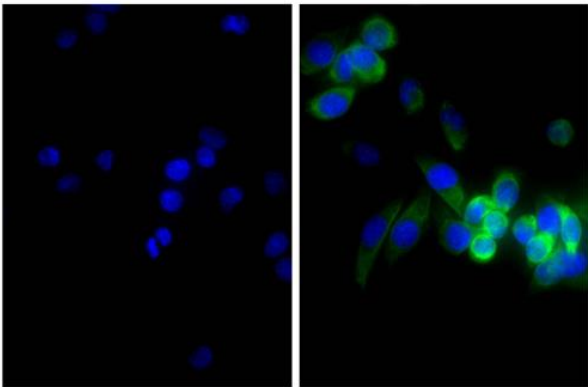
Pre Adsorbed	Mouse lambda light chains.	
Application table	Application	Dilution
	ELISA	1:5000 - 1:20000
	ELISPOT	Assay-dependent
	FACS	< 1 ug/10 ⁶ cells
	FLISA	Assay-dependent
	ICC/IF	Assay-dependent
	IHC-Fr	Assay-dependent
	IHC-P	Assay-dependent
	IP	Assay-dependent
	WB	Assay-dependent
Application Note	* The dilutions indicate recommended starting dilutions and the optimal dilutions or concentrations should be determined by the scientist.	

Properties

Form	Liquid
Purification	Affinity purification with immunogen.

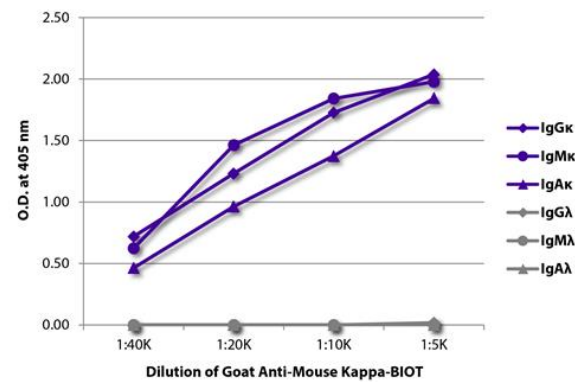
Buffer	PBS and 0.1% Sodium azide.
Preservative	0.1% Sodium azide
Concentration	0.5 mg/ml
Storage instruction	Aliquot and store in the dark at 2-8°C. Keep protected from prolonged exposure to light. Avoid repeated freeze/thaw cycles. Suggest spin the vial prior to opening. The antibody solution should be gently mixed before use.
Note	For laboratory research only, not for drug, diagnostic or other use.

Images



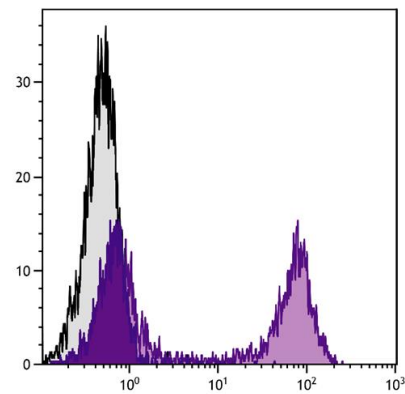
ARG21553 Goat anti-Mouse Kappa Light Chain antibody (Biotin) (pre-adsorbed) ICC/IF image

Immunofluorescence: Human pancreatic carcinoma cell line MIA PaCa-2 stained with anti-Cytokeratin 18 antibody (right), followed by ARG21553 Goat anti-Mouse Kappa Light Chain antibody (Biotin) (pre-adsorbed), Streptavidin (FITC) and DAPI.



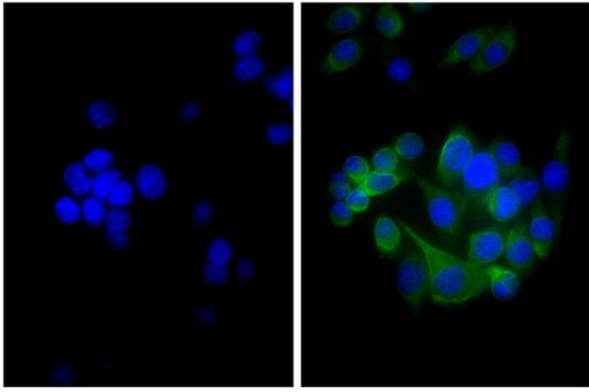
ARG21553 Goat anti-Mouse Kappa Light Chain antibody (Biotin) (pre-adsorbed) ELISA image

ELISA: The plate was coated with purified Mouse IgGκ, IgMκ, IgAκ, IgGλ, IgMλ, and IgAλ. Immunoglobulins were detected with serially diluted ARG21553 Goat anti-Mouse Kappa Light Chain antibody (Biotin) (pre-adsorbed) followed by [ARG23912](#) Streptavidin (HRP).



ARG21553 Goat anti-Mouse Kappa Light Chain antibody (Biotin) (pre-adsorbed) FACS image

Flow Cytometry: BALB/c Mouse splenocytes stained with ARG21553 Goat anti-Mouse Kappa Light Chain antibody (Biotin) (pre-adsorbed) followed by Streptavidin (FITC).



ARG21553 Goat anti-Mouse Kappa Light Chain antibody (Biotin) (pre-adsorbed) ICC/IF image

Immunofluorescence: Human pancreatic carcinoma cell line MIA PaCa-2 stained with anti-Cytokeratin 18 antibody (right), followed by ARG21553 Goat anti-Mouse Kappa Light Chain antibody (Biotin) (pre-adsorbed), Streptavidin (FITC) and DAPI.