

## ARG21561

### Goat anti-Mouse Lambda Light Chain antibody (Biotin), pre-adsorbed

Package: 500 µg

Store at: 4°C

## Summary

Product Description	Biotin-conjugated Goat Polyclonal antibody recognizes Mouse Lambda Light Chain
Tested Reactivity	Ms
Tested Application	ELISA, ELISPOT, FACS, FLISA, ICC/IF, IHC-Fr, IHC-P, IP, WB
Specificity	The antibody reacts with Mouse lambda light chains. The antibody is pre-adsorbed with Mouse kappa light chains, so the antibody may not react with Mouse kappa light chains, but may react with lambda light chains from other species.
Host	Goat
Clonality	Polyclonal
Isotype	IgG
Target Name	Lambda Light Chain
Species	Mouse
Conjugation	Biotin

## Application Instructions

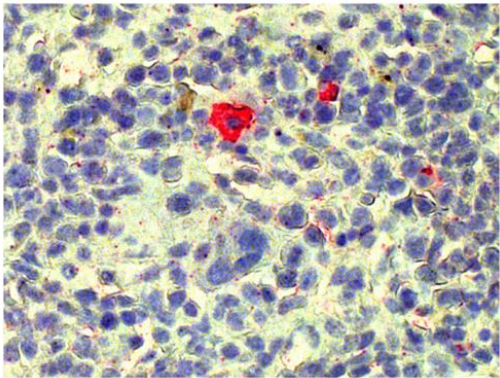
Pre Adsorbed	Mouse kappa light chains.	
Application table	Application	Dilution
	ELISA	1:5000 - 1:20000
	ELISPOT	Assay-dependent
	FACS	< 1 ug/10 <sup>6</sup> cells
	FLISA	Assay-dependent
	ICC/IF	Assay-dependent
	IHC-Fr	Assay-dependent
	IHC-P	Assay-dependent
	IP	Assay-dependent
	WB	Assay-dependent
Application Note	* The dilutions indicate recommended starting dilutions and the optimal dilutions or concentrations should be determined by the scientist.	

## Properties

Form	Liquid
Purification	Affinity purification with immunogen.

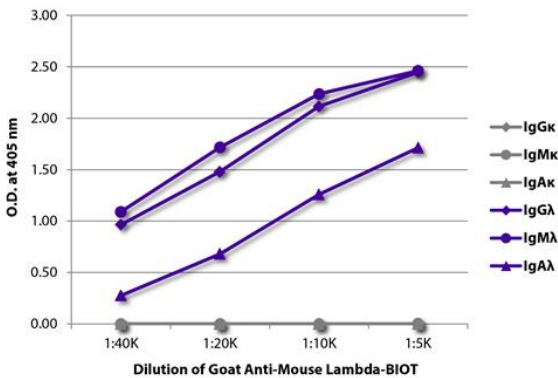
Buffer	PBS and 0.1% Sodium azide.
Preservative	0.1% Sodium azide
Concentration	0.5 mg/ml
Storage instruction	Aliquot and store in the dark at 2-8°C. Keep protected from prolonged exposure to light. Avoid repeated freeze/thaw cycles. Suggest spin the vial prior to opening. The antibody solution should be gently mixed before use.
Note	For laboratory research only, not for drug, diagnostic or other use.

Images



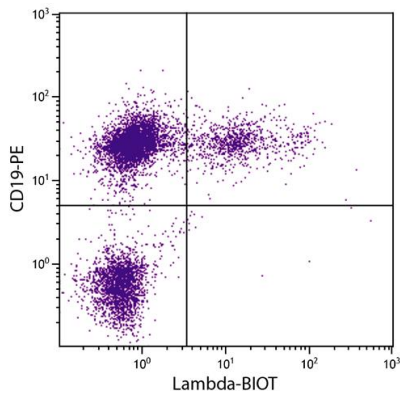
ARG21561 Goat anti-Mouse Lambda Light Chain antibody (Biotin) (pre-adsorbed) IHC-P image

Immunohistochemistry: Paraffin-embedded Mouse spleen tissue stained with ARG21561 Goat anti-Mouse Lambda Light Chain antibody (Biotin) (pre-adsorbed) followed by Streptavidin-AP, Red AP and hematoxylin.



ARG21561 Goat anti-Mouse Lambda Light Chain antibody (Biotin) (pre-adsorbed) ELISA image

ELISA: The plate was coated with purified Mouse IgGκ, IgMκ, IgAκ, IgGλ, IgMλ, and IgAλ. Immunoglobulins were detected with serially diluted ARG21561 Goat anti-Mouse Lambda Light Chain antibody (Biotin) (pre-adsorbed) followed by [ARG23912](#) Streptavidin (HRP).



ARG21561 Goat anti-Mouse Lambda Light Chain antibody (Biotin) (pre-adsorbed) FACS image

Flow Cytometry: BALB/c Mouse splenocytes stained with ARG21561 Goat anti-Mouse Lambda Light Chain antibody (Biotin) (pre-adsorbed) and [ARG20852](#) anti-CD19 antibody [6D5] (PE) followed by Streptavidin (FITC).