

## ARG21584 Goat anti-Mouse IgE antibody (Biotin), pre-adsorbed

Package: 500 µg  
Store at: 4°C

### Summary

|                     |  |
|---------------------|--|
| Product Description | Biotin-conjugated Goat Polyclonal antibody recognizes Mouse IgE  |
| Tested Reactivity   | Ms   |
| Tested Application  | ELISA, FACS, FLISA, IHC-P, IP, WB  |
| Specificity         | The antibody reacts with the heavy chain of Mouse IgE. The antibody is pre-adsorbed with Mouse IgG1, IgG2a, IgG2b, IgG3, IgM and IgA, so the antibody may not react with Mouse IgG1, IgG2a, IgG2b, IgG3, IgM and IgA, but may react with immunoglobulins from other species. |
| Host                | Goat   |
| Clonality           | Polyclonal   |
| Isotype             | IgG  |
| Target Name         | IgE  |
| Antigen Species     | Mouse  |
| Conjugation         | Biotin   |

### Application Instructions

| Pre Adsorbed      | Mouse IgG1, IgG2a, IgG2b, IgG3, IgM and IgA.  |             |          |       |                  |      |                 |       |                 |       |                 |    |                 |    |                 |
|-------------------|---|-------------|----------|-------|------------------|------|-----------------|-------|-----------------|-------|-----------------|----|-----------------|----|-----------------|
| Application table | <table><thead><tr><th>Application</th><th>Dilution</th></tr></thead><tbody><tr><td>ELISA</td><td>1:5000 - 1:20000</td></tr><tr><td>FACS</td><td>Assay-dependent</td></tr><tr><td>FLISA</td><td>Assay-dependent</td></tr><tr><td>IHC-P</td><td>Assay-dependent</td></tr><tr><td>IP</td><td>Assay-dependent</td></tr><tr><td>WB</td><td>Assay-dependent</td></tr></tbody></table> | Application | Dilution | ELISA | 1:5000 - 1:20000 | FACS | Assay-dependent | FLISA | Assay-dependent | IHC-P | Assay-dependent | IP | Assay-dependent | WB | Assay-dependent |
| Application       | Dilution  |             |          |       |                  |      |                 |       |                 |       |                 |    |                 |    |                 |
| ELISA             | 1:5000 - 1:20000  |             |          |       |                  |      |                 |       |                 |       |                 |    |                 |    |                 |
| FACS              | Assay-dependent   |             |          |       |                  |      |                 |       |                 |       |                 |    |                 |    |                 |
| FLISA             | Assay-dependent   |             |          |       |                  |      |                 |       |                 |       |                 |    |                 |    |                 |
| IHC-P             | Assay-dependent   |             |          |       |                  |      |                 |       |                 |       |                 |    |                 |    |                 |
| IP                | Assay-dependent   |             |          |       |                  |      |                 |       |                 |       |                 |    |                 |    |                 |
| WB                | Assay-dependent   |             |          |       |                  |      |                 |       |                 |       |                 |    |                 |    |                 |
| Application Note  | * The dilutions indicate recommended starting dilutions and the optimal dilutions or concentrations should be determined by the scientist.  |             |          |       |                  |      |                 |       |                 |       |                 |    |                 |    |                 |

### Properties

|               |                                       |
|---------------|---------------------------------------|
| Form          | Liquid                                |
| Purification  | Affinity purification with immunogen. |
| Buffer        | PBS and 0.1% Sodium azide.            |
| Preservative  | 0.1% Sodium azide                     |
| Concentration | 0.5 mg/ml                             |

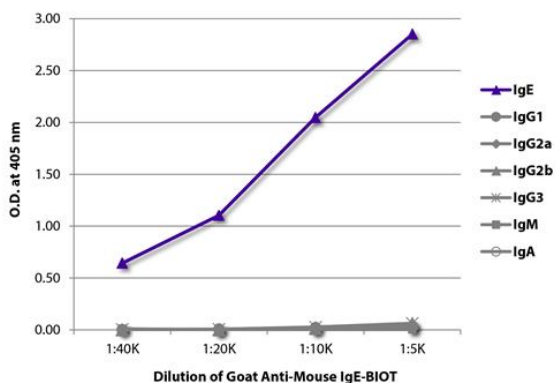
**Storage instruction**

Aliquot and store in the dark at 2-8°C. Keep protected from prolonged exposure to light. Avoid repeated freeze/thaw cycles. Suggest spin the vial prior to opening. The antibody solution should be gently mixed before use.

**Note**

For laboratory research only, not for drug, diagnostic or other use.

**Images**



ARG21584 Goat anti-Mouse IgE antibody (Biotin) (pre-adsorbed) ELISA image

ELISA: The plate was coated with purified Mouse IgE, IgG1, IgG2a, IgG2b, IgG3, IgM, and IgA. Immunoglobulins were detected with serially diluted ARG21584 Goat anti-Mouse IgE antibody (Biotin) (pre-adsorbed) followed by [ARG23912](#) Streptavidin (HRP).