

ARG21644 Goat anti-Human IgM antibody, pre-adsorbed

Package: 500 µg
Store at: -20°C

Summary

Product Description	Goat Polyclonal antibody recognizes Human IgM
Tested Reactivity	Hu
Tested Application	Depletion, ELISA, ELISPOT, FACS, FLISA, ICC/IF, IHC-Fr, IHC-P, IP, Puri, WB
Specificity	The antibody reacts with the heavy chain of Human IgM. The antibody is pre-adsorbed with Human IgG and IgA, so the antibody may not react with Human IgG and IgA, but may react with IgM from other species.
Host	Goat
Clonality	Polyclonal
Isotype	IgG
Target Name	IgM
Species	Human
Conjugation	Un-conjugated

Application Instructions

Pre Adsorbed	Human IgG and IgA.	
Application table	Application	Dilution
	Depletion	Assay-dependent
	ELISA	Assay-dependent
	ELISPOT	Assay-dependent
	FACS	Assay-dependent
	FLISA	Assay-dependent
	ICC/IF	Assay-dependent
	IHC-Fr	Assay-dependent
	IHC-P	Assay-dependent
	IP	Assay-dependent
	Puri	Assay-dependent
	WB	Assay-dependent
Application Note	* The dilutions indicate recommended starting dilutions and the optimal dilutions or concentrations should be determined by the scientist.	

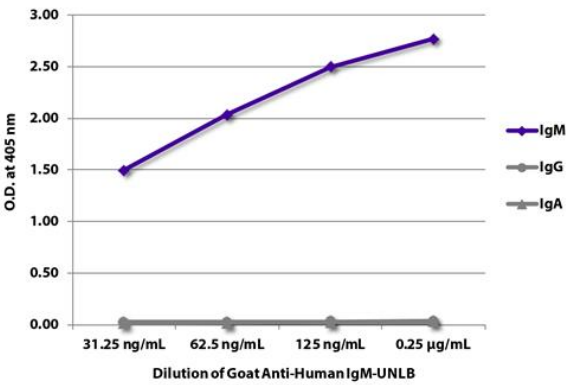
Properties

Form	Liquid
Purification	Affinity purification with immunogen.
Buffer	BBS (pH 8.2)
Concentration	1 mg/ml
Storage instruction	For continuous use, store undiluted antibody at 2-8°C for up to a week. For long-term storage, aliquot and store at -20°C. Storage in frost free freezers is not recommended. Avoid repeated freeze/thaw cycles. Suggest spin the vial prior to opening. The antibody solution should be gently mixed before use.
Note	For laboratory research only, not for drug, diagnostic or other use.

Bioinformation

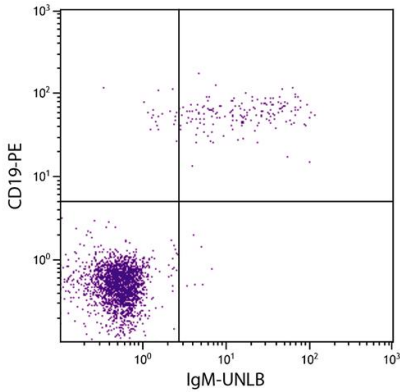
Highlight	Related news: Comprehensive anti-Human secondary antibodies
-----------	--

Images



ARG21644 Goat anti-Human IgM antibody (pre-adsorbed) ELISA image

ELISA: The plate was coated with purified Human IgM, IgG, and IgA. Immunoglobulins were detected with serially diluted ARG21644 Goat anti-Human IgM antibody (pre-adsorbed) followed by Mouse anti-Goat IgG (Fc) antibody (HRP).



ARG21644 Goat anti-Human IgM antibody (pre-adsorbed) FACS image

Flow Cytometry: Human peripheral blood lymphocytes stained with ARG21644 Goat anti-Human IgM antibody (pre-adsorbed) and [ARG21260](#) anti-CD19 antibody [SJ25-C1] (PE) followed by [ARG23856](#) Swine anti-Goat IgG (H+L) antibody (FITC) (pre-adsorbed).