

ARG21651 Goat anti-Human IgM antibody (PE), pre-adsorbed

Package: 250 µg
Store at: 4°C

Summary

Product Description	PE-conjugated Goat Polyclonal antibody recognizes Human IgM
Tested Reactivity	Hu
Tested Application	Depletion, FACS, FLISA, ICC/IF, IHC-Fr, IHC-P, WB
Specificity	The antibody reacts with the heavy chain of Human IgM. The antibody is pre-adsorbed with Human IgG and IgA, so the antibody may not react with Human IgG and IgA, but may react with IgM from other species.
Host	Goat
Clonality	Polyclonal
Isotype	IgG
Target Name	IgM
Species	Human
Conjugation	PE

Application Instructions

Pre Adsorbed	Human IgG and IgA.	
Application table	Application	Dilution
	Depletion	Assay-dependent
	FACS	< 0.1 µg/10 ⁶ cells
	FLISA	< 1 µg/ml
	ICC/IF	Assay-dependent
	IHC-Fr	Assay-dependent
	IHC-P	Assay-dependent
	WB	Assay-dependent
Application Note	* The dilutions indicate recommended starting dilutions and the optimal dilutions or concentrations should be determined by the scientist.	

Properties

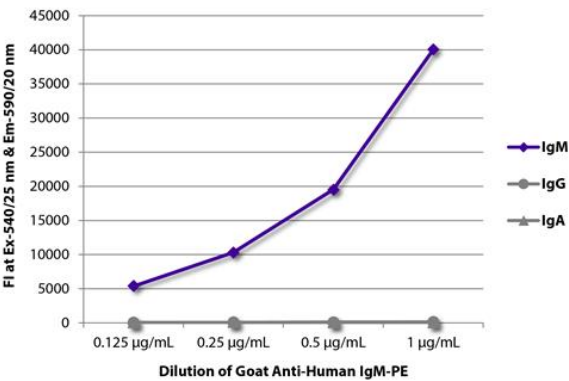
Form	Liquid
Purification	Affinity purification with immunogen.
Buffer	PBS, 0.1% Sodium azide and Sucrose.
Preservative	0.1% Sodium azide

Stabilizer	Sucrose
Concentration	0.5 mg/ml
Storage instruction	Aliquot and store in the dark at 2-8°C. Keep protected from prolonged exposure to light. Avoid repeated freeze/thaw cycles. Suggest spin the vial prior to opening. The antibody solution should be gently mixed before use.
Note	For laboratory research only, not for drug, diagnostic or other use.

Bioinformation

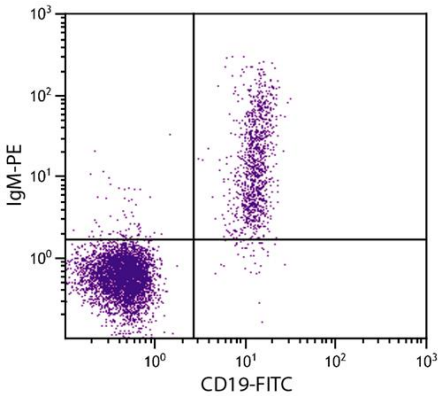
Highlight	Related news: Comprehensive anti-Human secondary antibodies
-----------	--

Images



ARG21651 Goat anti-Human IgM antibody (PE) (pre-adsorbed) FLISA image

FLISA: The plate was coated with purified Human IgM, IgG and IgA. Immunoglobulins were detected with serially diluted ARG21651 Goat anti-Human IgM antibody (PE) (pre-adsorbed).



ARG21651 Goat anti-Human IgM antibody (PE) (pre-adsorbed) FACS image

Flow Cytometry: Human peripheral blood lymphocytes stained with ARG21651 Goat anti-Human IgM antibody (PE) (pre-adsorbed) and [ARG21258](#) anti-CD19 antibody [SJ25-C1] (FITC).