

ARG21789 Mouse anti-Chicken IgM antibody [M-1] (PE)

Package: 100 µg
Store at: 4°C

Summary

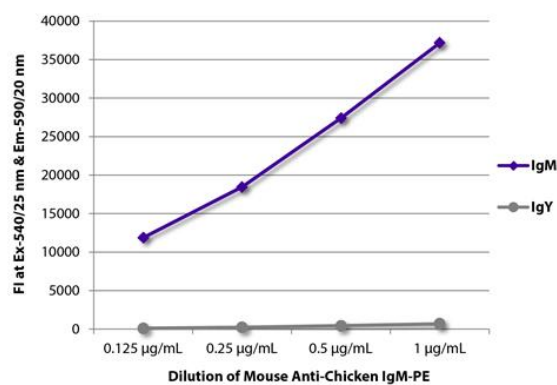
Product Description	PE-conjugated Mouse Monoclonal antibody [M-1] recognizes Chicken IgM
Tested Reactivity	Chk
Tested Application	FACS, FLISA, ICC/IF, IHC-Fr
Host	Mouse
Clonality	Monoclonal
Clone	M-1
Isotype	IgG2b, kappa
Target Name	IgM
Species	Chicken
Immunogen	Affinity purified chicken Ig or isolated lymphocytes
Conjugation	PE

Application Instructions

Application table	Application	Dilution
	FACS	< 0.2 µg/10 ⁶ cells
	FLISA	< 1 µg/ml
	ICC/IF	Assay-dependent
	IHC-Fr	Assay-dependent
Application Note	* The dilutions indicate recommended starting dilutions and the optimal dilutions or concentrations should be determined by the scientist.	

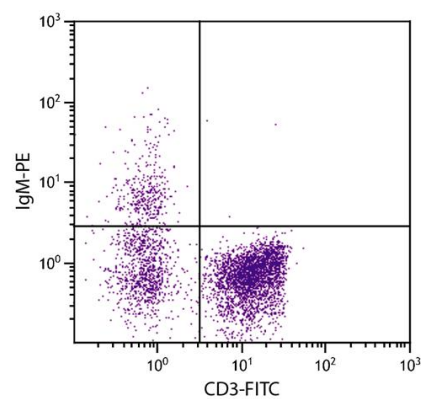
Properties

Form	Liquid
Buffer	PBS, 0.1% Sodium azide and Sucrose.
Preservative	0.1% Sodium azide
Stabilizer	Sucrose
Concentration	0.1 mg/ml
Storage instruction	Aliquot and store in the dark at 2-8°C. Keep protected from prolonged exposure to light. Avoid repeated freeze/thaw cycles. Suggest spin the vial prior to opening. The antibody solution should be gently mixed before use.
Note	For laboratory research only, not for drug, diagnostic or other use.



ARG21789 Mouse anti-Chicken IgM antibody [M-1] (PE) FLISA image

FLISA: The plate was coated with purified chicken IgM and IgY. Immunoglobulins were detected with serially diluted ARG21789 Mouse anti-Chicken IgM antibody [M-1] (PE).



ARG21789 Mouse anti-Chicken IgM antibody [M-1] (PE) FACS image

Flow Cytometry: Chicken peripheral blood lymphocytes stained with ARG21789 Mouse anti-Chicken IgM antibody [M-1] (PE) and [ARG21151](#) anti-CD3 antibody [CT-3] (FITC).