

ARG21799 Mouse anti-Chicken Lambda Light Chain antibody [L-1] (Biotin)

Package: 250 µg
Store at: 4°C

Summary

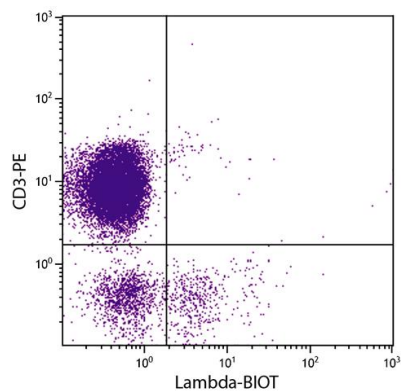
| | |
|---------------------|---|
| Product Description | Biotin-conjugated Mouse Monoclonal antibody [L-1] recognizes Chicken Lambda Light Chain |
| Tested Reactivity | Chk |
| Tested Application | FACS, ICC/IF, IHC-Fr, IP, WB |
| Host | Mouse |
| Clonality | Monoclonal |
| Clone | L-1 |
| Isotype | IgG1, kappa |
| Target Name | Lambda Light Chain |
| Species | Chicken |
| Immunogen | Affinity purified chicken Ig or isolated lymphocytes |
| Conjugation | Biotin |

Application Instructions

| Application table | Application | Dilution |
|-------------------|--|------------------------------|
| | FACS | < 1 ug/10 ⁶ cells |
| | ICC/IF | Assay-dependent |
| | IHC-Fr | Assay-dependent |
| | IP | Assay-dependent |
| | WB | Assay-dependent |
| Application Note | * The dilutions indicate recommended starting dilutions and the optimal dilutions or concentrations should be determined by the scientist. | |

Properties

| | |
|---------------------|--|
| Form | Liquid |
| Buffer | PBS and 0.1% Sodium azide. |
| Preservative | 0.1% Sodium azide |
| Concentration | 0.5 mg/ml |
| Storage instruction | Aliquot and store in the dark at 2-8°C. Keep protected from prolonged exposure to light. Avoid repeated freeze/thaw cycles. Suggest spin the vial prior to opening. The antibody solution should be gently mixed before use. |
| Note | For laboratory research only, not for drug, diagnostic or other use. |



ARG21799 Mouse anti-Chicken Lambda Light Chain antibody [L-1] (Biotin) FACS image

Flow Cytometry: Chicken peripheral blood lymphocytes stained with ARG21799 Mouse anti-Chicken Lambda Light Chain antibody [L-1] (Biotin) and [ARG21153](#) anti-CD3 antibody [CT-3] (PE) followed by Streptavidin (FITC).