

ARG21812 Mouse anti-Human IgD antibody [IADB6] (PE)

Package: 100 µg
Store at: 4°C

Summary

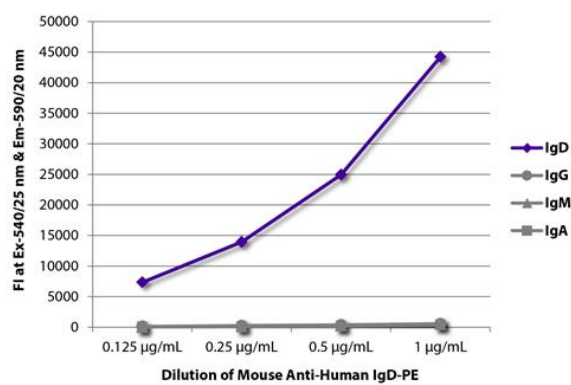
Product Description	PE-conjugated Mouse Monoclonal antibody [IADB6] recognizes Human IgD
Tested Reactivity	Hu
Tested Application	FACS, FLISA, IHC-Fr, IHC-P
Host	Mouse
Clonality	Monoclonal
Clone	IADB6
Isotype	IgG2a, kappa
Target Name	IgD
Species	Human
Immunogen	Human IgD myeloma protein
Conjugation	PE

Application Instructions

Application table	Application	Dilution
	FACS	< 0.1 µg/10 ⁶ cells
	FLISA	< 1 µg/ml
	IHC-Fr	Assay-dependent
	IHC-P	Assay-dependent
Application Note	* The dilutions indicate recommended starting dilutions and the optimal dilutions or concentrations should be determined by the scientist.	

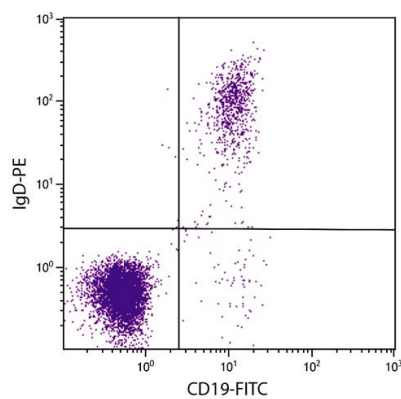
Properties

Form	Liquid
Buffer	PBS, 0.1% Sodium azide and Sucrose.
Preservative	0.1% Sodium azide
Stabilizer	Sucrose
Concentration	0.1 mg/ml
Storage instruction	Aliquot and store in the dark at 2-8°C. Keep protected from prolonged exposure to light. Avoid repeated freeze/thaw cycles. Suggest spin the vial prior to opening. The antibody solution should be gently mixed before use.
Note	For laboratory research only, not for drug, diagnostic or other use.



ARG21812 Mouse anti-Human IgD antibody [IADB6] (PE) FLISA image

FLISA: The plate was coated with purified Human IgD, IgG, IgM and IgA. Immunoglobulins were detected with serially diluted ARG21812 Mouse anti-Human IgD antibody [IADB6] (PE).



ARG21812 Mouse anti-Human IgD antibody [IADB6] (PE) FACS image

Flow Cytometry: Human peripheral blood lymphocytes stained with ARG21812 Mouse anti-Human IgD antibody [IADB6] (PE) and [ARG21258](#) anti-CD19 antibody [SJ25-C1] (FITC).