

ARG22045 anti-CD49e / Integrin alpha 5 antibody [5H10.27] (PE)

Package: 50 µg
Store at: 4°C

Summary

Product Description	PE-conjugated Rat Monoclonal antibody [5H10.27] recognizes CD49e / Integrin alpha 5
Tested Reactivity	Ms
Tested Application	BL, FACS, IHC-Fr
Specificity	Mouse CD49e
Host	Rat
Clonality	Monoclonal
Clone	5H10.27
Isotype	IgG2a, kappa
Target Name	CD49e / Integrin alpha 5
Species	Mouse
Immunogen	C57BL/6 x A/J F1 Mouse mast cell line MC/9
Conjugation	PE
Alternate Names	CD49e; CD49 antigen-like family member E; Integrin alpha-F; Fibronectin receptor subunit alpha; CD antigen CD49e; VLA-5; FNRA; VLA5A; Integrin alpha-5

Application Instructions

Application table	Application	Dilution
	BL	Assay-dependent
	FACS	< 0.3 µg/10 ⁶ cells
	IHC-Fr	Assay-dependent
Application Note	* The dilutions indicate recommended starting dilutions and the optimal dilutions or concentrations should be determined by the scientist.	

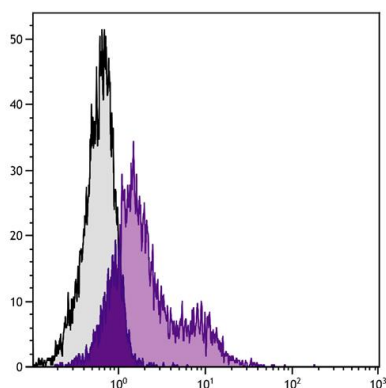
Properties

Form	Liquid
Buffer	PBS, 0.1% Sodium azide and Sucrose.
Preservative	0.1% Sodium azide
Stabilizer	Sucrose
Concentration	0.1 mg/ml
Storage instruction	Aliquot and store in the dark at 2-8°C. Keep protected from prolonged exposure to light. Avoid repeated freeze/thaw cycles. Suggest spin the vial prior to opening. The antibody solution should be gently mixed before use.

Bioinformation

Database links	GeneID: 16402 Mouse Swiss-port # P11688 Mouse
Gene Symbol	ITGA5
Gene Full Name	integrin alpha 5 (fibronectin receptor alpha)
Background	The product of this gene belongs to the integrin alpha chain family. Integrins are heterodimeric integral membrane proteins composed of an alpha chain and a beta chain. This gene encodes the integrin alpha 5 chain. Alpha chain 5 undergoes post-translational cleavage in the extracellular domain to yield disulfide-linked light and heavy chains that join with beta 1 to form a fibronectin receptor. In addition to adhesion, integrins are known to participate in cell-surface mediated signalling. Integrin alpha 5 and integrin alpha V chains are produced by distinct genes. [provided by RefSeq, Jan 2015]
Function	Integrin alpha-5/beta-1 is a receptor for fibronectin and fibrinogen. It recognizes the sequence R-G-D in its ligands. In case of HIV-1 infection, the interaction with extracellular viral Tat protein seems to enhance angiogenesis in Kaposi's sarcoma lesions. [UniProt]
Highlight	Related products: CD49e antibodies: Anti-Rat IgG secondary antibodies:
Calculated Mw	115 kDa
PTM	Proteolytic cleavage by PCSK5 mediates activation of the precursor.

Images



ARG22045 anti-CD49e / Integrin alpha 5 antibody [5H10.27] (PE)
FACS image

Flow Cytometry: Mouse bone marrow cells stained with ARG22045 anti-CD49e / Integrin alpha 5 antibody [5H10.27] (PE).