

ARG22047
anti-CD62L / L-Selectin antibody [MEL-14] (Biotin)

Package: 100 µg

Store at: 4°C

Summary

| | |
|---------------------|--|
| Product Description | Biotin-conjugated Rat Monoclonal antibody [MEL-14] recognizes CD62L / L-Selectin |
| Tested Reactivity | Ms |
| Tested Application | BL, FACS, IHC-Fr |
| Specificity | Mouse CD62L |
| Host | Rat |
| Clonality | Monoclonal |
| Clone | MEL-14 |
| Isotype | IgG2a, kappa |
| Target Name | CD62L / L-Selectin |
| Species | Mouse |
| Immunogen | C3H/eb cloned Mouse B cell lymphoma 38C-13 |
| Conjugation | Biotin |
| Alternate Names | Leukocyte surface antigen Leu-8; Leukocyte adhesion molecule 1; CD antigen CD62L; PLNHR; LSEL; CD62L; Leukocyte-endothelial cell adhesion molecule 1; L-selectin; LAM1; LNHR; TQ1; CD62 antigen-like family member L; gp90-MEL; Lymph node homing receptor; LYAM1; LECAM1; LEU8; LAM-1 |

Application Instructions

| | | |
|-------------------|--|------------------------------|
| Application table | Application | Dilution |
| | BL | Assay-dependent |
| | FACS | < 2 µg/10 ⁶ cells |
| | IHC-Fr | Assay-dependent |
| Application Note | * The dilutions indicate recommended starting dilutions and the optimal dilutions or concentrations should be determined by the scientist. | |

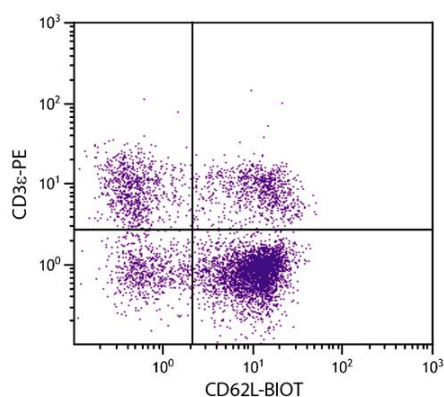
Properties

| | |
|---------------------|--|
| Form | Liquid |
| Buffer | PBS and 0.1% Sodium azide. |
| Preservative | 0.1% Sodium azide |
| Concentration | 0.5 mg/ml |
| Storage instruction | Aliquot and store in the dark at 2-8°C. Keep protected from prolonged exposure to light. Avoid repeated freeze/thaw cycles. Suggest spin the vial prior to opening. The antibody solution should be gently mixed before use. |

Bioinformation

| | |
|----------------|---|
| Database links | GeneID: 20343 Mouse Swiss-port # P18337 Mouse |
| Gene Symbol | SELL |
| Gene Full Name | selectin, lymphocyte |
| Background | This gene encodes a cell surface adhesion molecule that belongs to a family of adhesion/homing receptors. The encoded protein contains a C-type lectin-like domain, a calcium-binding epidermal growth factor-like domain, and two short complement-like repeats. The gene product is required for binding and subsequent rolling of leucocytes on endothelial cells, facilitating their migration into secondary lymphoid organs and inflammation sites. Single-nucleotide polymorphisms in this gene have been associated with various diseases including immunoglobulin A nephropathy. Alternatively spliced transcript variants have been found for this gene. [provided by RefSeq, Oct 2009] |
| Function | Cell surface adhesion protein. Mediates the adherence of lymphocytes to endothelial cells of high endothelial venules in peripheral lymph nodes. Promotes initial tethering and rolling of leukocytes in endothelia. [UniProt] |
| Calculated Mw | 42 kDa |

Images



ARG22047 anti-CD62L / L-Selectin antibody [MEL-14] (Biotin) FACS image

Flow Cytometry: BALB/c Mouse splenocytes stained with ARG22047 anti-CD62L / L-Selectin antibody [MEL-14] (Biotin) and [ARG20819](#) anti-CD3e antibody [C363.29B] (PE) followed by Streptavidin (FITC).