

## ARG22048 anti-CD62L / L-Selectin antibody [MEL-14] (PE)

Package: 50 µg  
Store at: 4°C

### Summary

Product Description	PE-conjugated Rat Monoclonal antibody [MEL-14] recognizes CD62L / L-Selectin
Tested Reactivity	Ms
Tested Application	BL, FACS, IHC-Fr
Specificity	Mouse CD62L
Host	Rat
Clonality	Monoclonal
Clone	MEL-14
Isotype	IgG2a, kappa
Target Name	CD62L / L-Selectin
Species	Mouse
Immunogen	C3H/eb cloned Mouse B cell lymphoma 38C-13
Conjugation	PE
Alternate Names	Leukocyte surface antigen Leu-8; Leukocyte adhesion molecule 1; CD antigen CD62L; PLNHR; LSEL; CD62L; Leukocyte-endothelial cell adhesion molecule 1; L-selectin; LAM1; LNHR; TQ1; CD62 antigen-like family member L; gp90-MEL; Lymph node homing receptor; LYAM1; LECAM1; LEU8; LAM-1

### Application Instructions

Application table	Application	Dilution
	BL	Assay-dependent
	FACS	< 0.1 µg/10 <sup>6</sup> cells
	IHC-Fr	Assay-dependent
Application Note	* The dilutions indicate recommended starting dilutions and the optimal dilutions or concentrations should be determined by the scientist.	

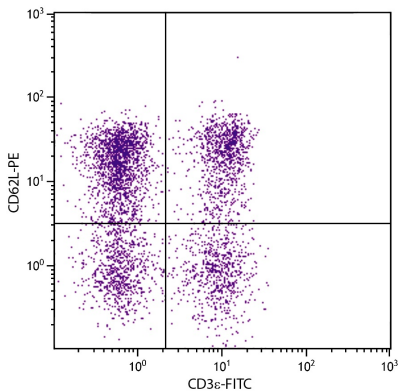
### Properties

Form	Liquid
Buffer	PBS, 0.1% Sodium azide and Sucrose.
Preservative	0.1% Sodium azide
Stabilizer	Sucrose
Concentration	0.1 mg/ml
Storage instruction	Aliquot and store in the dark at 2-8°C. Keep protected from prolonged exposure to light. Avoid repeated freeze/thaw cycles. Suggest spin the vial prior to opening. The antibody solution should be gently mixed before use.

Bioinformation

Database links	<a href="#">GeneID: 20343 Mouse</a> <a href="#">Swiss-port # P18337 Mouse</a>
Gene Symbol	SELL
Gene Full Name	selectin, lymphocyte
Background	This gene encodes a cell surface adhesion molecule that belongs to a family of adhesion/homing receptors. The encoded protein contains a C-type lectin-like domain, a calcium-binding epidermal growth factor-like domain, and two short complement-like repeats. The gene product is required for binding and subsequent rolling of leucocytes on endothelial cells, facilitating their migration into secondary lymphoid organs and inflammation sites. Single-nucleotide polymorphisms in this gene have been associated with various diseases including immunoglobulin A nephropathy. Alternatively spliced transcript variants have been found for this gene. [provided by RefSeq, Oct 2009]
Function	Cell surface adhesion protein. Mediates the adherence of lymphocytes to endothelial cells of high endothelial venules in peripheral lymph nodes. Promotes initial tethering and rolling of leukocytes in endothelia. [UniProt]
Calculated Mw	42 kDa

Images



ARG22048 anti-CD62L / L-Selectin antibody [MEL-14] (PE) FACS image

Flow Cytometry: BALB/c Mouse splenocytes stained with ARG22048 anti-CD62L / L-Selectin antibody [MEL-14] (PE) and anti-CD3e antibody (PE).