

ARG22072 anti-NK1.1 / CD161bc antibody [PK136] (FITC)

Package: 250 µg
Store at: 4°C

Summary

Product Description	FITC-conjugated Mouse Monoclonal antibody [PK136] recognizes NK1.1 / CD161bc
Tested Reactivity	Ms
Tested Application	BL, Cell-Act , Depletion, FACS, IHC-P
Specificity	Mouse NK1.1
Host	Mouse
Clonality	Monoclonal
Clone	PK136
Isotype	IgG2a, kappa
Target Name	NK1.1 / CD161bc
Species	Mouse
Immunogen	CE Mouse spleen enriched for NK-1+ cells and bone marrow cells
Conjugation	FITC
Alternate Names	CD antigen CD161c; AI462337; Ly-55c; Nkrp1c; NK-RP1; NKR-P1C; Ly-59; Killer cell lectin-like receptor subfamily B member 1C; NKR-P1.9; Ly55c; NKR-P1; NKR-P1 40; ly-55c; Ly59; Nk1.2; NKR-P140; CD161 antigen-like family member C; CD161; Lymphocyte antigen 55c; Nk1; Natural killer cell surface protein P1-40; Nk-1.2; NK1.1; Nk-1

Application Instructions

Application table	Application	Dilution
	BL	Assay-dependent
	Cell-Act	Assay-dependent
	Depletion	Assay-dependent
	FACS	< 1 µg/10 ⁶ cells
	IHC-P	Assay-dependent
Application Note	* The dilutions indicate recommended starting dilutions and the optimal dilutions or concentrations should be determined by the scientist.	

Properties

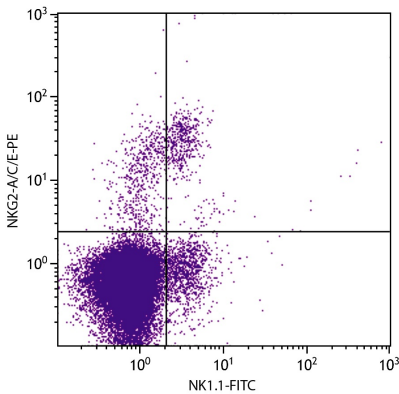
Form	Liquid
Buffer	PBS and 0.1% Sodium azide.
Preservative	0.1% Sodium azide
Concentration	0.5 mg/ml

Storage instruction	Aliquot and store in the dark at 2-8°C. Keep protected from prolonged exposure to light. Avoid repeated freeze/thaw cycles. Suggest spin the vial prior to opening. The antibody solution should be gently mixed before use.
Note	For laboratory research only, not for drug, diagnostic or other use.

Bioinformation

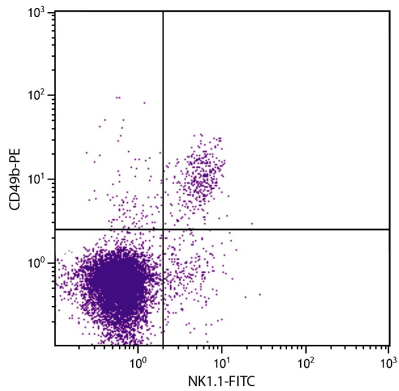
Database links	GeneID: 17059 Mouse Swiss-port # P27814 Mouse
Gene Symbol	Klrk1c
Gene Full Name	killer cell lectin-like receptor subfamily B member 1C
Function	Plays a stimulatory role on natural killer (NK) cells cytotoxicity. Activation by cross-linking of the receptor induces Ca(2+) mobilization and interferon-gamma production. [UniProt]
Calculated Mw	25 kDa

Images



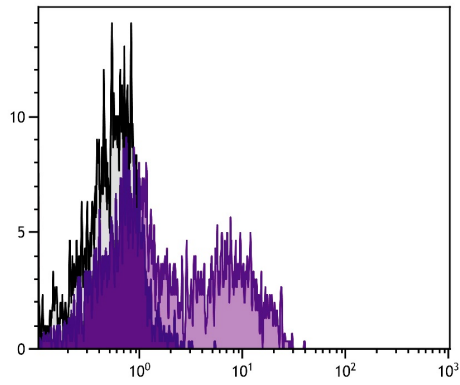
ARG22072 anti-NK1.1 / CD161bc antibody [PK136] (FITC) FACS image

Flow Cytometry: C57BL/6 Mouse splenocytes stained with [ARG22070](#) anti-NKG2-A + C + E antibody [20d5] (PE) and [ARG22072](#) anti-NK1.1 / CD161bc antibody [PK136] (FITC).



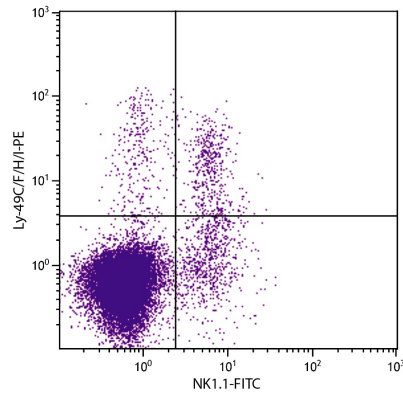
ARG22072 anti-NK1.1 / CD161bc antibody [PK136] (FITC) FACS image

Flow Cytometry: C57BL/6 Mouse splenocytes stained with [ARG21029](#) anti-CD49b antibody [DX5] (PE) and [ARG22072](#) anti-NK1.1 / CD161bc antibody [PK136] (FITC).



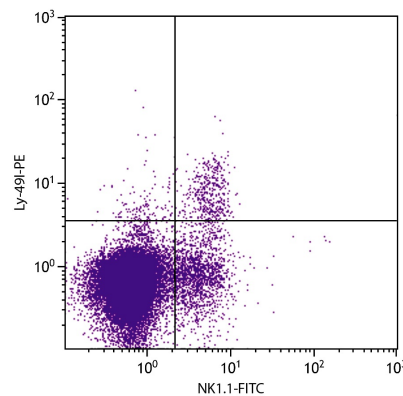
ARG22072 anti-NK1.1 / CD161bc antibody [PK136] (FITC) FACS image

Flow Cytometry: C57BL/6 Mouse splenocytes stained with [ARG21035](#) anti-KLRG1 antibody [2F1] (PE), [ARG22072](#) anti-NK1.1 / CD161bc antibody [PK136] (FITC), and [ARG20821](#) anti-CD3e antibody [C363.29B] (Spectral Red).



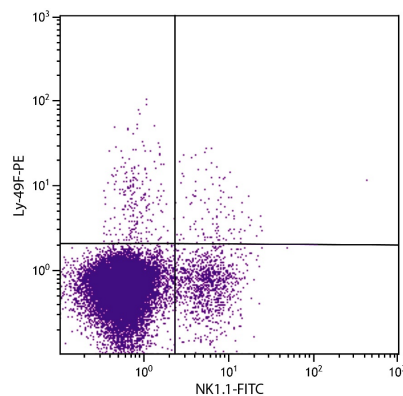
ARG22072 anti-NK1.1 / CD161bc antibody [PK136] (FITC) FACS image

Flow Cytometry: C57BL/6 Mouse splenocytes stained with ARG22325 anti-Ly49C + F + H + I antibody [14B11] (PE) and ARG22072 anti-NK1.1 / CD161bc antibody [PK136] (FITC).



ARG22072 anti-NK1.1 / CD161bc antibody [PK136] (FITC) FACS image

Flow Cytometry: C57BL/6 Mouse splenocytes stained with ARG22328 anti-Ly-49I antibody [YLI-90] (PE) and ARG22072 anti-NK1.1 / CD161bc antibody [PK136] (FITC).



ARG22072 anti-NK1.1 / CD161bc antibody [PK136] (FITC) FACS image

Flow Cytometry: C57BL/6 Mouse splenocytes stained with ARG22331 anti-Ly-49F antibody [HBF-719] (PE) and ARG22072 anti-NK1.1 / CD161bc antibody [PK136] (FITC).