

## ARG22082 anti-CD103 / Integrin alpha E antibody [2E7] (FITC)

Package: 250 µg  
Store at: 4°C

### Summary

Product Description	FITC-conjugated Hamster Monoclonal antibody [2E7] recognizes CD103 / Integrin alpha E
Tested Reactivity	Ms
Tested Application	Cell-Act , FACS, IHC-Fr
Specificity	Mouse CD103
Host	Hamster
Clonality	Monoclonal
Clone	2E7
Isotype	IgG2
Target Name	CD103 / Integrin alpha E
Species	Mouse
Immunogen	C57BL/6J Mouse intestinal intraepithelial lymphocytes (IEL)
Conjugation	FITC
Alternate Names	CD103; HUMINAE; Integrin alpha-E; Mucosal lymphocyte 1 antigen; CD antigen CD103; HML-1 antigen; Integrin alpha-IEL

### Application Instructions

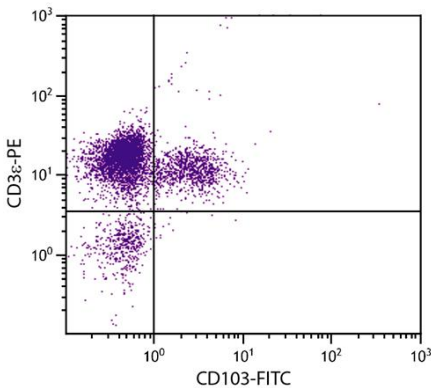
Application table	Application	Dilution
	Cell-Act	Assay-dependent
	FACS	< 1 µg/10 <sup>6</sup> cells
	IHC-Fr	Assay-dependent
Application Note	* The dilutions indicate recommended starting dilutions and the optimal dilutions or concentrations should be determined by the scientist.	

### Properties

Form	Liquid
Buffer	PBS and 0.1% Sodium azide.
Preservative	0.1% Sodium azide
Concentration	0.5 mg/ml
Storage instruction	Aliquot and store in the dark at 2-8°C. Keep protected from prolonged exposure to light. Avoid repeated freeze/thaw cycles. Suggest spin the vial prior to opening. The antibody solution should be gently mixed before use.
Note	For laboratory research only, not for drug, diagnostic or other use.

Database links	<a href="#">GeneID: 16407 Mouse</a> <a href="#">Swiss-port # Q60677 Mouse</a>
Gene Symbol	ITGAE
Gene Full Name	integrin alpha E, epithelial-associated
Background	Integrins are heterodimeric integral membrane proteins composed of an alpha chain and a beta chain. This gene encodes an I-domain-containing alpha integrin that undergoes post-translational cleavage in the extracellular domain, yielding disulfide-linked heavy and light chains. In combination with the beta 7 integrin, this protein forms the E-cadherin binding integrin known as the human mucosal lymphocyte-1 antigen. This protein is preferentially expressed in human intestinal intraepithelial lymphocytes (IEL), and in addition to a role in adhesion, it may serve as an accessory molecule for IEL activation. [provided by RefSeq, Jul 2008]
Function	Integrin alpha-E/beta-7 is a receptor for E-cadherin. It mediates adhesion of intra-epithelial T-lymphocytes to epithelial cell monolayers. [UniProt]
Calculated Mw	130 kDa

Images



ARG22082 anti-CD103 / Integrin alpha E antibody [2E7] (FITC) FACS image

Flow Cytometry: CD-1 Mouse mesenteric lymph node cells stained with ARG22082 anti-CD103 / Integrin alpha E antibody [2E7] (FITC) and [ARG20819](#) anti-CD3ε antibody [C363.29B] (PE).