

## ARG22089 anti-CD24 antibody [30-F1] (PE)

Package: 100 µg  
Store at: 4°C

### Summary

Product Description	PE-conjugated Rat Monoclonal antibody [30-F1] recognizes CD24
Tested Reactivity	Ms
Tested Application	FACS
Specificity	Mouse CD24
Host	Rat
Clonality	Monoclonal
Clone	30-F1
Isotype	IgG2c, kappa
Target Name	CD24
Species	Mouse
Immunogen	Mouse thymus or spleen
Conjugation	PE
Alternate Names	Signal transducer CD24; CD antigen CD24; CD24A; Small cell lung carcinoma cluster 4 antigen

### Application Instructions

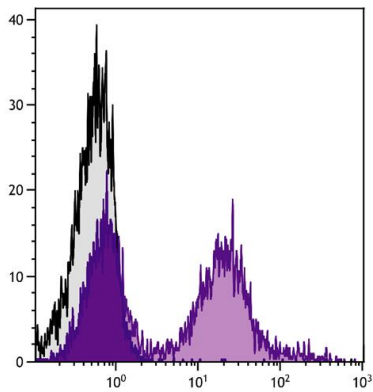
Application table	Application	Dilution
	FACS	< 0.2 µg/10 <sup>6</sup> cells
Application Note	* The dilutions indicate recommended starting dilutions and the optimal dilutions or concentrations should be determined by the scientist.	

### Properties

Form	Liquid
Buffer	PBS, 0.1% Sodium azide and Sucrose.
Preservative	0.1% Sodium azide
Stabilizer	Sucrose
Concentration	0.1 mg/ml
Storage instruction	Aliquot and store in the dark at 2-8°C. Keep protected from prolonged exposure to light. Avoid repeated freeze/thaw cycles. Suggest spin the vial prior to opening. The antibody solution should be gently mixed before use.
Note	For laboratory research only, not for drug, diagnostic or other use.

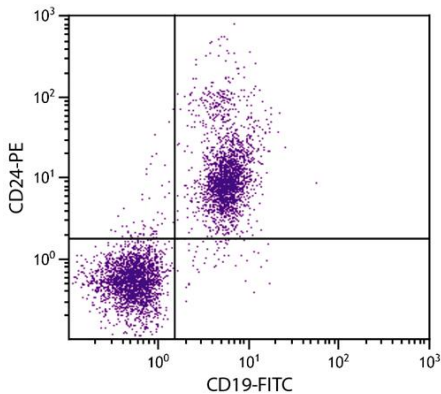
Gene Symbol	CD24
Gene Full Name	CD24a antigen
Background	This gene encodes a sialoglycoprotein that is expressed on mature granulocytes and B cells and modulates growth and differentiation signals to these cells. The precursor protein is cleaved to a short 32 amino acid mature peptide which is anchored via a glycosyl phosphatidylinositol (GPI) link to the cell surface. This gene was missing from previous genome assemblies, but is properly located on chromosome 6. Non-transcribed pseudogenes have been designated on chromosomes 1, 15, 20, and Y. Alternative splicing results in multiple transcript variants. [provided by RefSeq, Apr 2014]
Function	Modulates B-cell activation responses. Signaling could be triggered by the binding of a lectin-like ligand to the CD24 carbohydrates, and transduced by the release of second messengers derived from the GPI-anchor. Promotes AG-dependent proliferation of B-cells, and prevents their terminal differentiation into antibody-forming cells. [UniProt]
Calculated Mw	8 kDa
PTM	Extensively O-glycosylated.

Images



ARG22089 anti-CD24 antibody [30-F1] (PE) FACS image

Flow Cytometry: BALB/c Mouse splenocytes stained with ARG22089 anti-CD24 antibody [30-F1] (PE).



ARG22089 anti-CD24 antibody [30-F1] (PE) FACS image

Flow Cytometry: BALB/c Mouse splenocytes stained with ARG22089 anti-CD24 antibody [30-F1] (PE) and [ARG20850](#) anti-CD19 antibody [6D5] (FITC).