

ARG22120 anti-MHC Class I H2 Db antibody [27-11-13S] (PE)

Package: 50 µg
Store at: 4°C

Summary

Product Description	PE-conjugated Mouse Monoclonal antibody [27-11-13S] recognizes MHC Class I H2 Db
Tested Reactivity	Ms
Tested Application	FACS, ICC/IF
Specificity	Mouse H-2Db
Host	Mouse
Clonality	Monoclonal
Clone	27-11-13S
Isotype	IgG2a, kappa
Target Name	MHC Class I H2 Db
Species	Mouse
Immunogen	BDF1 Mouse splenocytes
Conjugation	PE
Alternate Names	H-2 class I histocompatibility antigen, D-B alpha chain; H2-DB; H-2D

Application Instructions

Application table	Application	Dilution
	FACS	< 0.2 µg/10 ⁶ cells
	ICC/IF	Assay-dependent
Application Note	* The dilutions indicate recommended starting dilutions and the optimal dilutions or concentrations should be determined by the scientist.	

Properties

Form	Liquid
Buffer	PBS, 0.1% Sodium azide and Sucrose.
Preservative	0.1% Sodium azide
Stabilizer	Sucrose
Concentration	0.1 mg/ml
Storage instruction	Aliquot and store in the dark at 2-8°C. Keep protected from prolonged exposure to light. Avoid repeated freeze/thaw cycles. Suggest spin the vial prior to opening. The antibody solution should be gently mixed before use.
Note	For laboratory research only, not for drug, diagnostic or other use.

Bioinformation

Database links

[GeneID: 14964 Mouse](#)

[Swiss-port # P01899 Mouse](#)

Gene Symbol

H2-D1

Gene Full Name

histocompatibility 2, D region locus 1

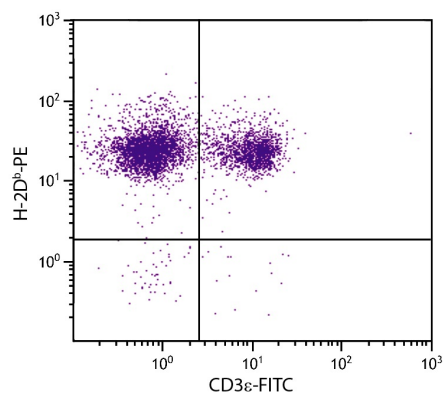
Function

Involved in the presentation of foreign antigens to the immune system. [UniProt]

Calculated Mw

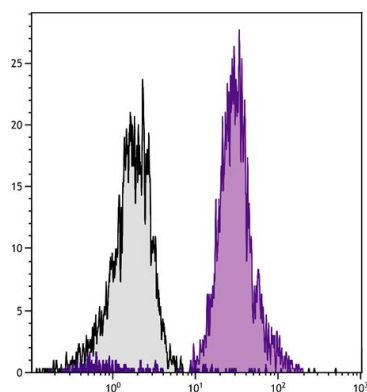
41 kDa

Images



ARG22120 anti-MHC Class I H2 Db antibody [27-11-13S] (PE) FACS image

Flow Cytometry: BALB/c Mouse splenocytes stained with ARG22120 anti-MHC Class I H2 Db antibody [27-11-13S] (PE) and anti-CD3_ε antibody (FITC).



ARG22120 anti-MHC Class I H2 Db antibody [27-11-13S] (PE) FACS image

Flow Cytometry: BALB/c Mouse splenocytes stained with ARG22120 anti-MHC Class I H2 Db antibody [27-11-13S] (PE).