

## ARG22174 anti-CD49f / Integrin alpha 6 antibody [4F10] (FITC)

Package: 50 tests  
Store at: 4°C

### Summary

Product Description	FITC-conjugated Mouse Monoclonal antibody [4F10] recognizes CD49f / Integrin alpha 6
Tested Reactivity	Hu
Tested Application	FACS, IHC-Fr, IHC-P
Specificity	Human CD49f
Host	Mouse
Clonality	Monoclonal
Clone	4F10
Isotype	IgG2b, kappa
Target Name	CD49f / Integrin alpha 6
Species	Human
Immunogen	SW1222 Human colorectal cell line
Conjugation	FITC
Alternate Names	CD49 antigen-like family member F; ITGA6B; Alpha6p; VLA-6; CD antigen CD49f; CD49f; Integrin alpha-6

### Application Instructions

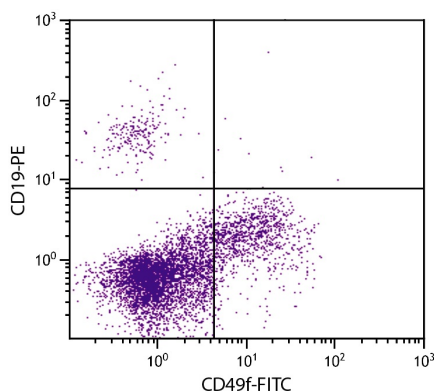
Application table	Application	Dilution
	FACS	10 µl/10 <sup>6</sup> cells
	IHC-Fr	Assay-dependent
	IHC-P	Assay-dependent
Application Note	* The dilutions indicate recommended starting dilutions and the optimal dilutions or concentrations should be determined by the scientist.	

### Properties

Form	Liquid
Buffer	PBS and 0.1% Sodium azide.
Preservative	0.1% Sodium azide
Storage instruction	Aliquot and store in the dark at 2-8°C. Keep protected from prolonged exposure to light. Avoid repeated freeze/thaw cycles. Suggest spin the vial prior to opening. The antibody solution should be gently mixed before use.
Note	For laboratory research only, not for drug, diagnostic or other use.

Database links	<a href="#">GeneID: 3655 Human</a> <a href="#">Swiss-port # P23229 Human</a>
Gene Symbol	ITGA6
Gene Full Name	integrin, alpha 6
Background	<p>The ITGA6 protein product is the integrin alpha chain alpha 6. Integrins are integral cell-surface proteins composed of an alpha chain and a beta chain. A given chain may combine with multiple partners resulting in different integrins. For example, alpha 6 may combine with beta 4 in the integrin referred to as TSP180, or with beta 1 in the integrin VLA-6. Integrins are known to participate in cell adhesion as well as cell-surface mediated signalling. Two transcript variants encoding different isoforms have been found for this gene. [provided by RefSeq, Jul 2008]</p>
Function	<p>Integrin alpha-6/beta-1 is a receptor for laminin on platelets. Integrin alpha-6/beta-4 is a receptor for laminin in epithelial cells and it plays a critical structural role in the hemidesmosome. [UniProt]</p>
Calculated Mw	127 kDa
PTM	<p>Isoforms containing segment A, but not segment B, are the major targets for PMA-induced phosphorylation. Phosphorylation occurs on 'Ser-1103' of isoform alpha-6X1X2A. Phosphorylation is not required for the induction of integrin alpha-6A/beta-1 high affinity but may reduce the affinity for ligand.</p> <p>In invasive prostate cancer ITGA6 undergoes PLAU-mediated cleavage at residues Arg-634-635-Arg in a time-dependent manner enhancing cell invasion and migration in vitro.</p> <p>Palmitoylation by DHHC3 enhances stability and cell surface expression.</p>

## Images



ARG22174 anti-CD49f / Integrin alpha 6 antibody [4F10] (FITC) FACS image

Flow Cytometry: Human peripheral blood lymphocytes stained with [ARG22174](#) anti-CD49f / Integrin alpha 6 antibody [4F10] (FITC) and [ARG21260](#) anti-CD19 antibody [SJ25-C1] (PE).