

## ARG22180 anti-CD107a / LAMP1 antibody [H4A3] (FITC)

Package: 50 tests  
Store at: 4°C

### Summary

Product Description	FITC-conjugated Mouse Monoclonal antibody [H4A3] recognizes CD107a / LAMP1
Tested Reactivity	Hu, AGMK, Macaq, R. Mk
Tested Application	EM, FACS, ICC/IF, IHC-Fr, IHC-P, WB
Specificity	Human/Rhesus/African Green Monkey/Pigtail Macaque/Sooty Mangabey CD107a
Host	Mouse
Clonality	Monoclonal
Clone	H4A3
Isotype	IgG1, kappa
Target Name	CD107a / LAMP1
Species	Human
Immunogen	Human adherent peripheral blood cells
Conjugation	FITC
Alternate Names	LGP120; CD107a; LAMPA; CD antigen CD107a; Lysosome-associated membrane glycoprotein 1; CD107 antigen-like family member A; LAMP-1; Lysosome-associated membrane protein 1

### Application Instructions

Application table	Application	Dilution
	EM	Assay-dependent
	FACS	10 µl/10 <sup>6</sup> cells
	ICC/IF	1:50
	IHC-Fr	Assay-dependent
	IHC-P	Assay-dependent
	WB	Assay-dependent
	Application Note	* The dilutions indicate recommended starting dilutions and the optimal dilutions or concentrations should be determined by the scientist.

### Properties

Form	Liquid
Buffer	PBS and 0.1% Sodium azide.
Preservative	0.1% Sodium azide
Storage instruction	Aliquot and store in the dark at 2-8°C. Keep protected from prolonged exposure to light. Avoid repeated freeze/thaw cycles. Suggest spin the vial prior to opening. The antibody solution should be

gently mixed before use.

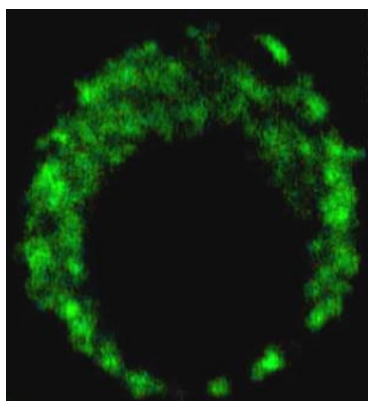
#### Note

For laboratory research only, not for drug, diagnostic or other use.

## Bioinformation

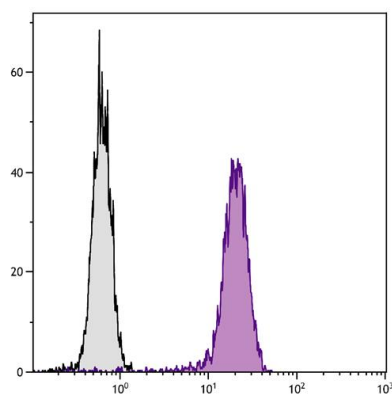
Database links	<a href="#">GeneID: 3916 Human</a> <a href="#">Swiss-port # P11279 Human</a>
Gene Symbol	LAMP1
Gene Full Name	lysosomal-associated membrane protein 1
Background	The protein encoded by this gene is a member of a family of membrane glycoproteins. This glycoprotein provides selectins with carbohydrate ligands. It may also play a role in tumor cell metastasis. [provided by RefSeq, Jul 2008]
Function	Presents carbohydrate ligands to selectins. Also implicated in tumor cell metastasis. [UniProt]
Research Area	Cancer antibody; Cell Death antibody; Controls and Markers antibody; Developmental Biology antibody; Metabolism antibody; Neuroscience antibody; Signaling Transduction antibody; Lysosome Marker antibody
Calculated Mw	45 kDa
PTM	O- and N-glycosylated; some of the 18 N-linked glycans are polylactosaminoglycans. The glycosylation of N-76 is essential for Lassa virus entry into cells.

## Images



ARG22180 anti-CD107a / LAMP1 antibody [H4A3] (FITC) ICC/IF image

Immunofluorescence: Human myeloid dendritic cells fixed with 4% paraformaldehyde for 15 min, permeabilized with PBS containing 100 µg/ml of digitonin and 1% BSA for 30 min. Cells were stained with ARG22180 anti-CD107a / LAMP1 antibody [H4A3] (FITC) at 1:50 dilution.



ARG22180 anti-CD107a / LAMP1 antibody [H4A3] (FITC) FACS image

Flow Cytometry: Human T cell leukemia cell line Jurkat was intracellularly stained with ARG22180 anti-CD107a / LAMP1 antibody [H4A3] (FITC).