

## ARG22199 anti-SLC12A3 / NCC antibody

Package: 50 µg  
Store at: -20°C

### Summary

Product Description	Rabbit Polyclonal antibody recognizes SLC12A3 / NCC
Tested Reactivity	Hu, Ms, Rat, Dog
Tested Application	EM, ICC/IF, IHC-P, WB
Specificity	Detects ~160kDa.
Host	Rabbit
Clonality	Polyclonal
Target Name	SLC12A3 / NCC
Species	Rat
Immunogen	Synthetic peptide around aa. 74-95 (N-terminus) of Rat NCC
Conjugation	Un-conjugated
Alternate Names	Solute carrier family 12 member 3; TSC; Na-Cl cotransporter; Thiazide-sensitive sodium-chloride cotransporter; Na-Cl symporter; NCCT; NCC

### Application Instructions

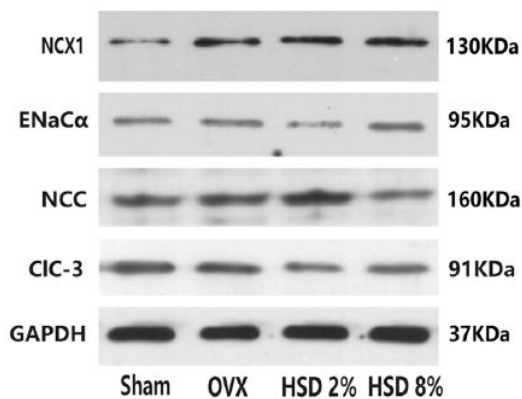
Application table	Application	Dilution
	EM	Assay-dependent
	ICC/IF	Assay-dependent
	IHC-P	Assay-dependent
	WB	1:1000
Application Note	* The dilutions indicate recommended starting dilutions and the optimal dilutions or concentrations should be determined by the scientist.	

### Properties

Form	Liquid
Purification	Purification with Protein A.
Buffer	PBS, 0.09% Sodium azide and 50% Glycerol
Preservative	0.09% Sodium azide
Stabilizer	50% Glycerol
Concentration	1 mg/ml
Storage instruction	For continuous use, store undiluted antibody at 2-8°C for up to a week. For long-term storage, aliquot and store at -20°C. Storage in frost free freezers is not recommended. Avoid repeated freeze/thaw cycles. Suggest spin the vial prior to opening. The antibody solution should be gently mixed before use.

Note	For laboratory research only, not for drug, diagnostic or other use.
<b>Bioinformation</b>	
Gene Symbol	Slc12a3
Gene Full Name	solute carrier family 12 (sodium/chloride transporter), member 3
Background	This gene encodes a renal thiazide-sensitive sodium-chloride cotransporter that is important for electrolyte homeostasis. This cotransporter mediates sodium and chloride reabsorption in the distal convoluted tubule. Mutations in this gene cause Gitelman syndrome, a disease similar to Bartter's syndrome, that is characterized by hypokalemic alkalosis combined with hypomagnesemia, low urinary calcium, and increased renin activity associated with normal blood pressure. This cotransporter is the target for thiazide diuretics that are used for treating high blood pressure. Multiple transcript variants encoding different isoforms have been found for this gene. [provided by RefSeq, Jul 2008]
Function	Key mediator of sodium and chloride reabsorption in this nephron segment, accounting for a significant fraction of renal sodium reabsorption. [UniProt]
Calculated Mw	113 kDa
PTM	Ubiquitinated; ubiquitination is essential for regulation of endocytosis. The BCR(KLHL3) complex was initially identified as a candidate ubiquitin ligase for SLC12A3 (PubMed:22406640). However, it was later shown that it is not the case.
Cellular Localization	Phosphorylated in response to IL18. Membrane

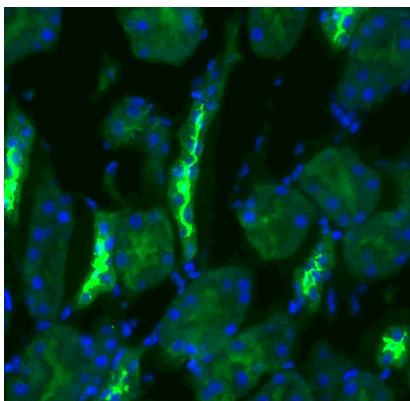
Images



ARG22199 anti-SLC12A3 / NCC antibody WB image

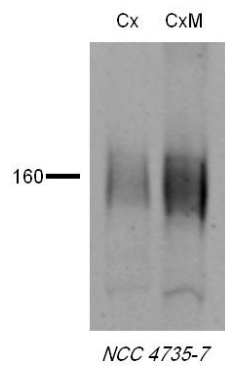
Western blot: Mouse femur stained with ARG22199 anti-SLC12A3 / NCC antibody.

From Cui Y et al. Ecotoxicol Environ Saf (2022), [doi: 10.1016/j.ecoenv.2022.114024](https://doi.org/10.1016/j.ecoenv.2022.114024), Fig. 3. C.



ARG22199 anti-SLC12A3 / NCC antibody IHC image

Immunohistochemistry: Rat kidney tissue stained with ARG22199 anti-SLC12A3 / NCC antibody at 1:200 dilution. DAPI merge.



ARG22199 anti-SLC12A3 / NCC antibody WB image

Western blot: Rat tissue lysates stained with ARG22199 anti-SLC12A3 / NCC antibody at 1:1000 dilution.