

## ARG22214 anti-GRP94 antibody [9G10]

Package: 100 µg  
Store at: -20°C

### Summary

Product Description	Rat Monoclonal antibody [9G10] recognizes GRP94
Tested Reactivity	Hu, Ms, Rat, Bov, Chk, Dog, Gpig, Hm, Hrs, Mk, Pig, Rb, Sheep, Xenopus laevis
Tested Application	FACS, ICC/IF, IP, WB
Specificity	Detects ~98kDa. Does not detect human Hsp90, Grp74, or GrpE from E.coli.
Host	Rat
Clonality	Monoclonal
Clone	9G10
Isotype	IgG2a
Target Name	GRP94
Species	Chicken
Immunogen	Purified GRP94 isolated from chicken oviducts
Conjugation	Un-conjugated
Alternate Names	Tumor rejection antigen 1; gp96 homolog; Endoplasmic; 94 kDa glucose-regulated protein; HEL-S-125m; GP96; GRP94; TRA1; HEL35; GRP-94; Heat shock protein 90 kDa beta member 1; ECGP

### Application Instructions

Application table	Application	Dilution
	FACS	Assay-dependent
	ICC/IF	1:100
	IP	Assay-dependent
	WB	1:2000
Application Note	* The dilutions indicate recommended starting dilutions and the optimal dilutions or concentrations should be determined by the scientist.	

### Properties

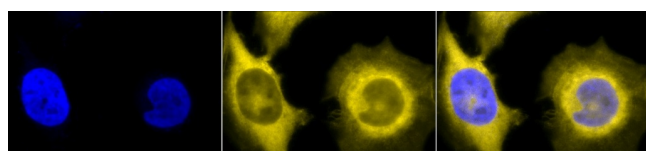
Form	Liquid
Purification	Purification with Protein G.
Buffer	PBS (pH 7.2), 0.09% Sodium azide and 50% Glycerol
Preservative	0.09% Sodium azide
Stabilizer	50% Glycerol
Concentration	1 mg/ml

Storage instruction	For continuous use, store undiluted antibody at 2-8°C for up to a week. For long-term storage, aliquot and store at -20°C. Storage in frost free freezers is not recommended. Avoid repeated freeze/thaw cycles. Suggest spin the vial prior to opening. The antibody solution should be gently mixed before use.
Note	For laboratory research only, not for drug, diagnostic or other use.

## Bioinformation

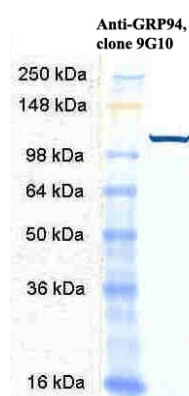
Gene Symbol	HSP90B1
Gene Full Name	heat shock protein 90kDa beta (Grp94), member 1
Background	This gene encodes a member of a family of adenosine triphosphate(ATP)-metabolizing molecular chaperones with roles in stabilizing and folding other proteins. The encoded protein is localized to melanosomes and the endoplasmic reticulum. Expression of this protein is associated with a variety of pathogenic states, including tumor formation. There is a microRNA gene located within the 5' exon of this gene. There are pseudogenes for this gene on chromosomes 1 and 15. [provided by RefSeq, Aug 2012]
Function	Molecular chaperone that functions in the processing and transport of secreted proteins. When associated with CNPY3, required for proper folding of Toll-like receptors (By similarity). Functions in endoplasmic reticulum associated degradation (ERAD). Has ATPase activity. [UniProt]
Calculated Mw	92 kDa
Cellular Localization	Endoplasmic Reticulum, Endoplasmic reticulum lumen, Melanosome

## Images



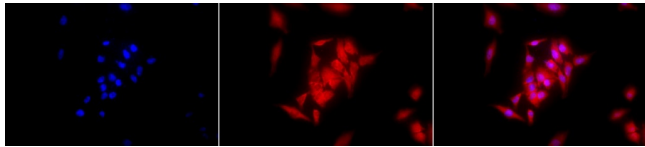
ARG22214 anti-GRP94 antibody [9G10] ICC/IF image

Immunocytochemistry: 2% Formaldehyde (20 min at RT) fixed Heat Shocked HeLa cells stained with ARG22214 anti-GRP94 antibody [9G10] (yellow) at 1:100 dilution (12 hours at 4°C). Counterstain: DAPI (blue) nuclear stain at 1:40000 for 120 min at RT. Magnification: 100x. Left: DAPI (blue) nuclear stain, Middle: Primary antibody, Right: Composite.



ARG22214 anti-GRP94 antibody [9G10] WB image

Western blot: Human HeLa cell lysates stained with ARG22214 anti-GRP94 antibody [9G10] at 1:1000 dilution.



#### ARG22214 anti-GRP94 antibody [9G10] ICC/IF image

Immunocytochemistry: 2% Formaldehyde (20 min at RT) fixed Heat Shocked HeLa cells stained with ARG22214 anti-GRP94 antibody [9G10] (red) at 1:100 dilution (12 hours at 4°C). Counterstain: DAPI (blue) nuclear stain at 1:40000 for 120 min at RT. Magnification: 20x. Left: DAPI (blue) nuclear stain, Middle: Primary antibody, Right: Composite.

---